

Form	Application for a premises licence
Your Details	
Name/s:	SCRC Holdings Ltd
Premises	
Postal address of premises or, if none, ordnance survey map reference or description:	1/2/3 Caffyns Row, High Street, Handcross
Postcode	RH17 6BJ
Non-domestic rateable value of premises.	£4301 - £33000
Applicant type	
Please state whether you are applying for a premises licence as: a person other than an individual - i) as a limited company	
Applicant type	
Please confirm:	I am carrying on or proposing to carry on a business which involves the use of the premises for licensable activities
Individual Applicants	
Second Applicant	
Other Applicants	
Name	SCRC Holdings Ltd
Registered number (where applicable)	15315847
Description	Limited Company
Operating Schedule	

When do you want the premises licence to start?	
If you wish the licence to be valid only for a limited period, when do you want it to end?	
If 5,000 or more people are expected to attend the premises at any one time, please state the number expected to attend.	
Description of premises	
Description	A new convenience store in the village of Handcross supplying groceries. Sale of alcohol for consumption off of the premises. It will be trading as Budgens.
Licensable Activities	
Plays	
Will you be provisioning Plays?	No
Monday	
Tuesday	
Wednesday	
Thursday	
Friday	
Saturday	
Sunday	
Films	
Will you be provisioning Films?	No
Monday	
Tuesday	
Wednesday	
Thursday	
Friday	
Saturday	
Sunday	
Indoor Sports	
Will you be provisioning Indoor Sporting events?	No
Monday	
Tuesday	
Wednesday	
Thursday	
Friday	

Saturday		
Sunday		
Boxing or wrestling		
Will you be provisioning boxing or wrestling events?		
Monday		
Tuesday		
Wednesday		
Thursday		
Friday		
Saturday		
Sunday		
Live Music		
Will you be provisioning Live Music?		
Monday		
Tuesday		
Wednesday		
Thursday		
Friday		
Saturday		
Sunday		
Recorded Music		
Will you be provisioning Recorded Music?		
Monday		
Tuesday		
Wednesday		
Thursday		
Friday		
Saturday		
Sunday		
Performances of dance		
Will you be provisioning		

Performances of dance?	
Monday	
Tuesday	
Wednesday	
Thursday	
Friday	
Saturday	
Sunday	
Similar to live music, recorded music or performances of dance	
Will you be provisioning anything with a similar description to live music, recorded music or Performances of dance?	No
Monday	
Tuesday	
Wednesday	
Thursday	
Friday	
Saturday	
Sunday	
Late Night Refreshment	
Will you be provisioning any late night refreshment?	No
Monday	
Tuesday	
Wednesday	
Thursday	
Friday	
Saturday	
Sunday	
Supply of alcohol	
Will you be provisioning any alcohol?	Yes

[illegible]

Opening Hours	
Monday	
Start Time	07:00
End Time	21:00
Tuesday	
Start Time	07:00
End Time	21:00
Wednesday	
Start Time	07:00
End Time	21:00
Thursday	
Start Time	07:00
End Time	21:00
Friday	
Start Time	07:00
End Time	21:00
Saturday	
Start Time	07:00
End Time	21:00
Sunday	
Start Time	07:00
End Time	20:00
State any seasonal variations : For example (but not exclusively) where the supply of alcohol will occur on additional days during the summer months.	
Non standard timings. Where you intend to use the premises to be open at different times from those listed above, please list: For example (but not exclusively), where you wish the activity to go on longer on a particular day e.g. Christmas Eve.	
Adult Entertainment	
Please highlight any adult entertainment or services, activities, or other entertainment or matters ancillary to the use of the premises that may give rise to concern in respect of children.	
Licensing Objectives	
General - all four licensing objectives (b,c,d,e): Please list here steps you will take to promote all four licensing objectives together.	The store will have a CCTV system that will record for 28 days.
	Staff induction training prior to selling alcohol and ongoing training
	Challenge 25 will be in place with only photo ID accepted
	A refusals and incident record will be kept on the store and made available for inspection by police or local authority officers

The prevention of crime and disorder:	<p>The store will have a CCTV system that will record for 28 days.</p> <p>Staff induction training prior to selling alcohol and ongoing training</p> <p>Challenge 25 will be in place with only photo ID accepted</p> <p>A refusals and incident record will be kept on the store and made available for inspection by police or local authority officers</p>
--	---

Public safety:	<p>The store will have a CCTV system that will record for 28 days.</p> <p>Staff induction training prior to selling alcohol and ongoing training</p> <p>Challenge 25 will be in place with only photo ID accepted</p> <p>A refusals and incident record will be kept on the store and made available for inspection by police or local authority officers</p>
-----------------------	---

The prevention of public nuisance:	The store will have a CCTV system that will record for 28 days.
	Staff induction training prior to selling alcohol and ongoing training
	Challenge 25 will be in place with only photo ID accepted
	A refusals and incident record will be kept on the store and made available for inspection by police or local authority officers

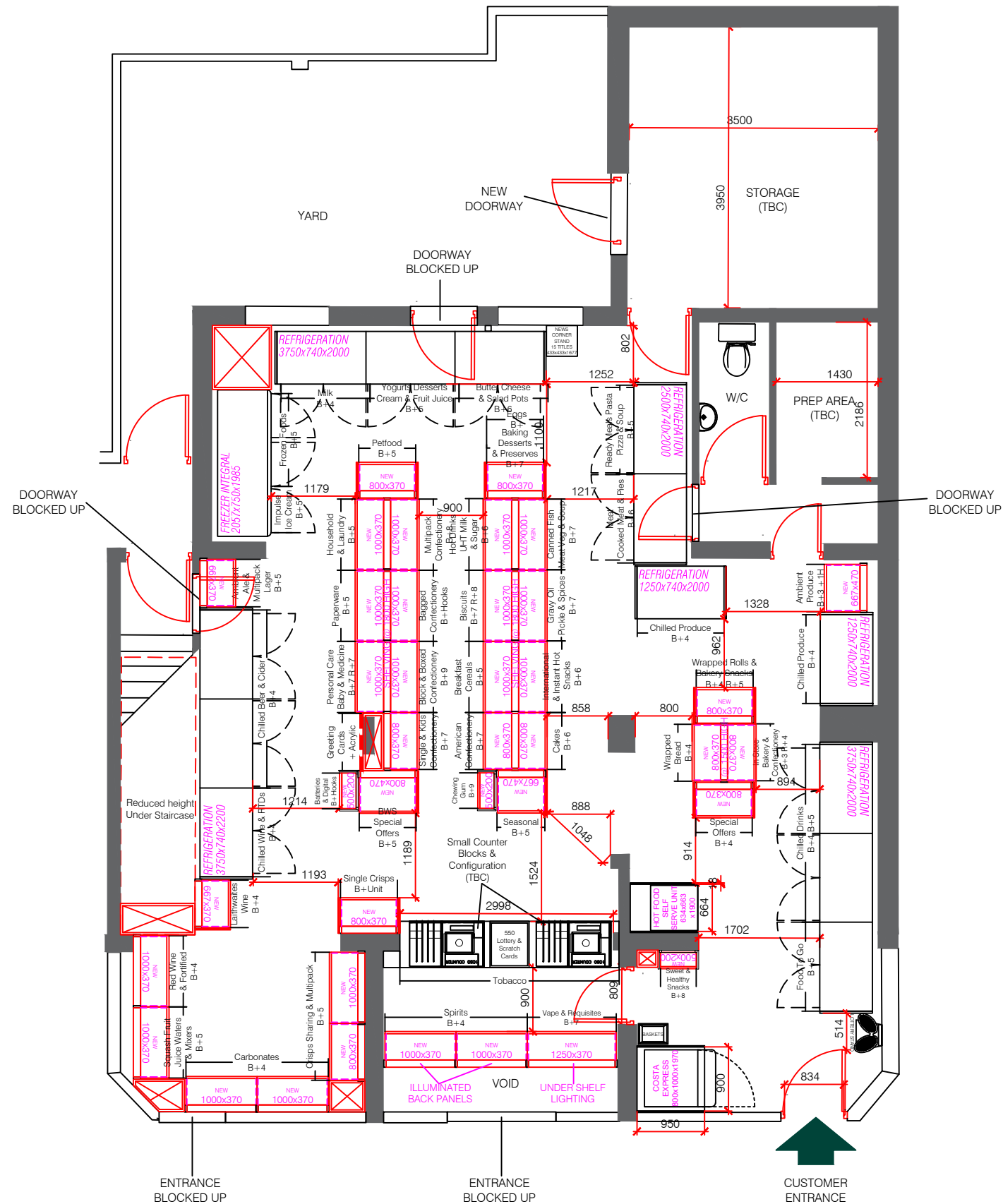
The protection of children from harm:	The store will have a CCTV system that will record for 28 days.
	Staff induction training prior to selling alcohol and ongoing training
	Challenge 25 will be in place with only photo ID accepted
	A refusals and incident record will be kept on the store and made available for inspection by police or local authority officers

Right to work

Signatures

LAYOUT NOT APPROVED FOR DISCUSSION PURPOSES ONLY

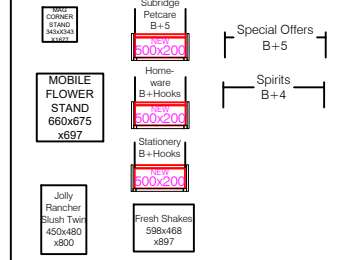
LAYOUT NOT TO SCALE
(ALL DIMENSIONS TO BE CHECKED)



SPACE ANALYSIS NOTES

- Ambient Produce in 665 bay
- Meat Bays combined
- 1 x Dairy & provisions bay short
- 2 x Good To Go concepts short & Not to Brand Spec
- All Bakery bays 800mm (All short by 200mm)
- 2 x Frozen Food Doors short
- Baking Desserts & Preserves short by 200mm & have Egg Combined into bay
- Pet Food short by 200mm
- Greeting Cards on slat (Not bay)
- No Homeware side frame
- No Stationery side frame
- No Magazine Cube
- Single confectionery short by 200mm
- Healthy & Sweets Snacks in side frame
- Sharing & Multi Packs Crisps short by 200mm
- Single Crisps short by 200mm
- Seasonal bay in 665 short by 350mm
- 1 x Specail Offers bay short
- 1 x Spirits Bay short
- Tight aisle widths throughout store
- Counter blocks @ 1050mm (TBC)
- All store dimensions to be check before ant equipment is ordered
- Back of house area (TBC)
- Prep Area to be configured (TBC)
- Doorways to blocked up (TBC)
- New Doorway to be made in storage area (TBC)

MISSING EQUIPMENT & BAYS



Budgens

HANDCROSS

PROPOSED

ADDRESS	CAFFYNS ROW HIGH STREET HAYWARDS HEATH RH17 6BJ
FORMAT	STANDARD
SALES AREA	1071 SQ/FT APPROX
GROUND FLOOR AREA	SQ/FT
FIRST FLOOR AREA	SQ/FT
DRAWN BY	D. OUTRAM
SCALE	1:75 @ A3
DATE	12.01.24
REVISION	A

NOTES

BUDGENS SPACE ANALYSIS

New Store	Category	STANDARD 1500 SQFT	ACTUAL SPACE
	Produce	2 Chilled Bays 1 Ambient Bay	2 Chilled Bays 1 Ambient Bay
	Meat	1 Chilled Bay	0.5 Chilled Bays
	Dairy Provisions	3 Chilled Bays	4.5 Chilled Bays
	Food To Go	1 Chilled Bay	1 Chilled Bay
	Food & Drinks to Go	4 Units	2 Units
	Chilled Soft Drinks	2 Chilled Bays	2 Chilled Bays
	Bakery	4 Bays	4 Bays (4 x 600)
	Frozen	4 Door + Ice Cream Unit	3 Bays (16c Impulse Ice Cream) 3 Bays (3 x 600) + Eggs
	Grocery	7 Bays	
	Grocery Non Food	4 Bays	4 Bays
	Non Food	1 Unit	0 Unit
	Confectionery	6 Bays	5 Bay (2 x 600)
	Crisps & Snacks	3 Bays	3 Bays (2 x 600)
	Take Home Drinks	3 Bays	3 Bays
	BWS	3 Bays Chilled 3 Ambient	3 Bays Chilled 3 Ambient
	Value Seasonal		3 Bay (2 x 600 + 1 x 665)
	Kiosk / Vape	4 Bays	3 Bay
	Total	63	54

SPACE

ANALYSIS KEY
RANGE SHORT
RANGE COMPROMISED
RANGE TO MATRIX
RANGE OVER

ALL DIMENSIONS ARE SHOWN IN MILLIMETRES UNLESS STATED OTHERWISE, & MUST BE CHECKED BY THE SHOPFITTER PRIOR TO COMMENCEMENT OF WORK ON SITE.

THIS DRAWING IS TO BE READ IN CONJUNCTION WITH ALL OTHER RELEVANT DRAWINGS, DOCUMENTS & SPECIFICATIONS.

ALL WORK IS TO BE CARRIED OUT BY A QUALIFIED SHOPFITTER IN ACCORDANCE WITH THE MANUFACTURERS/SUPPLIER'S INSTRUCTIONS AND TO THE CURRENT CODES OF PRACTICE & LEGISLATION.

THE FEASIBILITY OF THIS DRAWING MUST BE CHECKED BY A QUALIFIED SHOPFITTER WHO SHOULD ENSURE THAT THE DRAWING MEETS ALL THE REQUIRED LEGAL REQUIREMENTS.

BOOKER RETAIL PARTNERS (GB) LTD & THE DRAWER TAKE NO RESPONSIBILITY FOR THE FEASIBILITY OF THIS DRAWING.

THE DRAWER OF THIS DRAWING DOES NOT ACT AS THE PRINCIPAL DESIGNER.

FOR ANY QUERIES PLEASE CONTACT THE STORE DEVELOPMENT DEPARTMENT OR THE RELEVANT MEMBER OF THE PROJECT TEAM.

THIS DRAWING IS THE PROPERTY OF BOOKER RETAIL PARTNERS (GB) LTD AND IS NOT TO BE COPIED EITHER IN FULL OR IN PART WITHOUT THE PRIOR CONSENT OF BOOKER RETAIL PARTNERS (GB) LTD.

THE INFORMATION CONTAINED WITHIN THIS DRAWING IS STRICTLY CONFIDENTIAL AND ALL PARTIES ARE ADVISED TO CONTROL THEIR PROFESSIONAL ADVICE WITHIN THE SCOPE OF THE CONSULTANT'S OBLIGATIONS AND THE SUITABILITY OF THESE DRAWINGS.

BOOKER RETAIL PARTNERS (GB) LTD ACCEPTS NO LIABILITY FOR ANY LOSS OR DAMAGE SUSTAINED BY A USER ARISING FROM THE USE OF THIS DRAWING.

IF THE STORE IS SUBJECT TO THE HFSS REGULATIONS THEN IT IS THE BUSINESS OWNER'S RESPONSIBILITY TO ENSURE COMPLIANCE. THE LAYOUTS ON THIS PLAN ARE GUIDANCE FOR YOU TO CONSIDER

COPYRIGHT: BOOKER RETAIL PARTNERS LTD (GB) LTD. ALL RIGHTS RESERVED