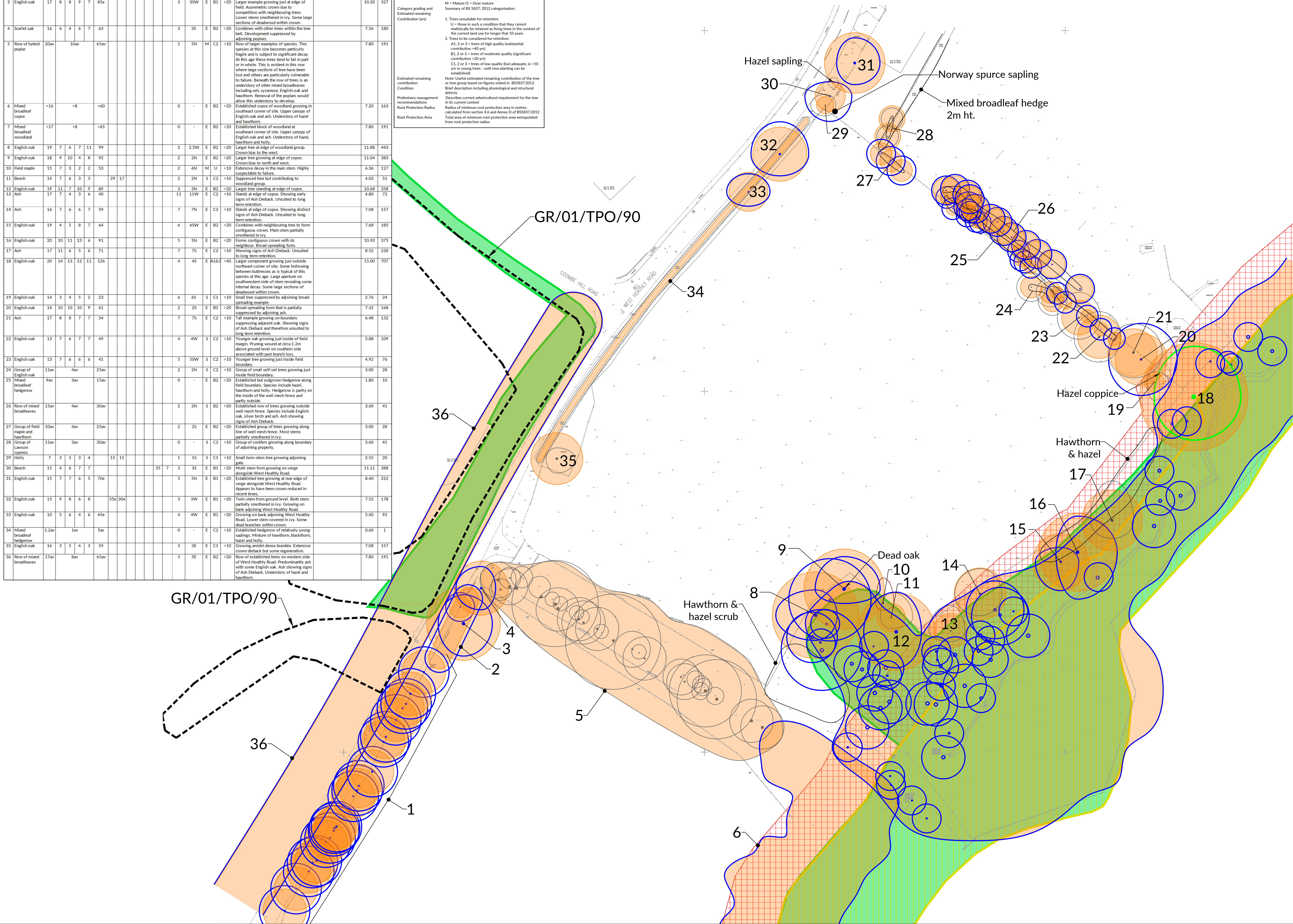


| Trees on land at West Hoathly Road, East Grinstead | | | | | | | | | | | | | | | | | | | | | | | |
|--|-----------------------------------|--------|-------------------|----|------|----|---------------------|-----------|--------|--------|--------|--------|--------------------|-------------------------------|---|-----------|------------------|--|---|--|--|----------------------------|--------------------------|
| Tree No. | Species | Ht (m) | Branch Spread (m) | | | | Stem diameters (cm) | | | | | | More than 15 stems | Height of crown clearance (m) | Height of crown (m) and direction (compass point) | Age class | Category grading | Estimated remaining contribution (yrs) | Condition | Physiological / Structural | Preliminary management recommendations | Root protection radius (m) | Root protection area sqm |
| | | | N | E | S | W | Single Stem | 2-5 stems | | | | | | | | | | | | | | | |
| | | | | | | | | Stem 1 | Stem 2 | Stem 3 | Stem 4 | Stem 5 | | | | | | | | | | | |
| 1 | Row of mixed broadleaves | 15av | | | 7av | | | 50av | | | | | | | 5 | SW | E | B2 | >20 | Established row of trees alongside road. Taller trees predominantly English oak, ash and sycamore. Understory of hazel, holly and hawthorn. | | 6.00 | 113 |
| 2 | Row of mixed broadleaves | 13av | | | 4av | | | 25av | | | | | | | 5 | SW | E | B2 | >20 | Row of small trees growing on edge of road. Taller examples include English oak, ash and sycamore. Understory of holly, hawthorn and hazel. | | 3.00 | 28 |
| 3 | English oak | 17 | 8 | 8 | 9 | 7 | 85e | | | | | | | | 3 | 3SW | E | B1 | >20 | Larger example growing just at edge of field. Asymmetric crown due to competition with neighbouring trees. Lower stems smothered in ivy. Some large sections of deadwood within crown. | | 10.20 | 327 |
| 4 | Scarlet oak | 16 | 6 | 4 | 6 | 7 | 63 | | | | | | | | 3 | 3S | E | B2 | >20 | Combines with other trees within the tree belt. Development suppressed by adjoining poplars. | | 7.56 | 180 |
| 5 | Row of hybrid poplar | 20av | | | 10av | | | 65av | | | | | | | 5 | 5N | M | C2 | >10 | Row of larger examples of species. This species at this size becomes particularly fragile and is subject to significant decay. At this age these trees tend to fall in part or in whole. This is evident in this row where large sections of tree have been lost and others are particularly vulnerable to failure. Beneath the row of trees is an understorey of other mixed broadleaves including ash, sycamore, English oak and hawthorn. Removal of the poplars would allow this understorey to develop. | | 7.80 | 191 |
| 6 | Mixed broadleaf copse | <16 | | | <8 | | | <60 | | | | | | 0 | - | E | B2 | >20 | Established copse of woodland growing in southeast corner of site. Upper canopy of English oak and ash. Understory of hazel and hawthorn. | | 7.20 | 163 | |
| 7 | Mixed broadleaf woodland | <17 | | | <8 | | | <65 | | | | | | 0 | - | E | B2 | >20 | Established block of woodland at southeast corner of site. Upper canopy of English oak and ash. Understory of hazel, hawthorn and holly. | | 7.80 | 191 | |
| 8 | English oak | 19 | 7 | 6 | 7 | 11 | 99 | | | | | | | 2 | 2.5W | E | B2 | >20 | Larger tree at edge of woodland group. Crown bias to the west. | | 11.88 | 443 | |
| 9 | English oak | 18 | 9 | 10 | 4 | 8 | 92 | | | | | | | 2 | 2N | E | B2 | >20 | Larger tree growing at edge of copse. Crown bias to north and west. | | 11.04 | 383 | |
| 10 | Field maple | 15 | 7 | 3 | 2 | 2 | 53 | | | | | | | 2 | 6N | M | U | >10 | Extensive decay in the main stem. Highly susceptible to failure. | | 6.36 | 127 | |
| 11 | Beech | 14 | 7 | 6 | 3 | 3 | 29 | 17 | | | | | | 2 | 2N | S | C2 | >10 | Suppressed tree but contributing to woodland group. | | 4.03 | 51 | |
| 12 | English oak | 19 | 11 | 7 | 10 | 9 | 89 | | | | | | | 3 | 3N | E | B2 | >20 | Larger tree standing at edge of copse. Stands at edge of copse. Showing early signs of Ash Dieback. Unsuitable to long term retention. | | 10.68 | 358 | |
| 13 | Ash | 17 | 7 | 4 | 3 | 6 | 40 | | | | | | | 11 | 11W | E | C2 | >10 | Stands at edge of copse. Showing distinct signs of Ash Dieback. Unsuitable to long term retention. | | 4.80 | 72 | |
| 14 | Ash | 16 | 7 | 6 | 6 | 7 | 59 | | | | | | | 7 | 7N | E | C2 | >10 | Stands at edge of copse. Showing distinct signs of Ash Dieback. Unsuitable to long term retention. | | 7.08 | 157 | |
| 15 | English oak | 19 | 4 | 5 | 8 | 7 | 64 | | | | | | | 6 | 6SW | E | B2 | >20 | Combines with neighbouring tree to form contiguous crown. Main stem partially smothered in ivy. | | 7.68 | 185 | |
| 16 | English oak | 20 | 10 | 11 | 13 | 6 | 91 | | | | | | | 5 | 5N | E | B2 | >20 | Forms contiguous crown with its neighbour. Broad-spreading form. | | 10.92 | 375 | |
| 17 | Ash | 17 | 11 | 6 | 5 | 6 | 71 | | | | | | | 7 | 7S | E | C2 | >10 | Showing signs of Ash Dieback. Unsuitable to long term retention. | | 8.52 | 228 | |
| 18 | English oak | 20 | 14 | 13 | 12 | 11 | 126 | | | | | | | 4 | 4S | E | A1&2 | >40 | Larger component growing just outside northeast corner of site. Some hollowing between buttresses as is typical of this species at this age. Large aperture on southwestern side of stem revealing some internal decay. Some large sections of deadwood within crown. | | 15.00 | 707 | |
| 19 | English oak | 14 | 3 | 4 | 5 | 2 | 23 | | | | | | | 6 | 6S | S | C1 | >10 | Small tree suppressed by adjoining broad-spreading example. | | 2.76 | 24 | |
| 20 | English oak | 14 | 10 | 10 | 10 | 9 | 61 | | | | | | | 2 | 2S | E | B2 | >20 | Broad-spreading form that is partially suppressed by adjoining ash. | | 7.32 | 168 | |
| 21 | Ash | 17 | 8 | 8 | 7 | 7 | 54 | | | | | | | 7 | 7S | E | C2 | >10 | Tall example growing on boundary suppressing adjacent oak. Showing signs of Ash Dieback and therefore unsuitable to long term retention. | | 6.48 | 132 | |
| 22 | English oak | 13 | 7 | 6 | 7 | 7 | 49 | | | | | | | 4 | 4W | S | C2 | >10 | Younger oak growing just inside of field margin. Pruning wound at circa 1.2m above ground level on southern side associated with past branch loss. | | 5.88 | 109 | |
| 23 | English oak | 13 | 7 | 6 | 6 | 6 | 41 | | | | | | | 5 | 5SW | S | C2 | >10 | Younger tree growing just inside field boundary. | | 4.92 | 76 | |
| 24 | Group of English oak | 11av | | | 4av | | | 25av | | | | | | 2 | 2N | S | C2 | >10 | Group of small self-set trees growing just inside field boundary. | | 3.00 | 28 | |
| 25 | Mixed broadleaf hedgerow | 9av | | | 3av | | | 15av | | | | | | 0 | - | E | B2 | >20 | Established but outgrown hedgerow along field boundary. Species include hazel, hawthorn and holly. Hedgerow is partly on the inside of the well mesh fence and partly outside. | | 1.80 | 10 | |
| 26 | Row of mixed broadleaves | 15av | | | 4av | | | 30av | | | | | | 2 | 2N | S | B2 | >20 | Established row of trees growing outside well mesh fence. Species include English oak, silver birch and ash. Ash showing signs of Ash Dieback. | | 3.60 | 41 | |
| 27 | Group of field maple and hawthorn | 10av | | | 4av | | | 25av | | | | | | 2 | 2S | E | B2 | >20 | Established group of trees growing along line of well mesh fence. Most stems partially smothered in ivy. | | 3.00 | 28 | |
| 28 | Group of Lawson cypress | 11av | | | 3av | | | 30av | | | | | | 0 | - | S | C2 | >10 | Group of conifers growing along boundary of adjoining property. | | 3.60 | 41 | |
| 29 | Holly | 7 | 3 | 3 | 3 | 4 | | 15 | 15 | | | | | 1 | 1S | S | C1 | >10 | Small twin-stem tree growing adjoining gate. | | 2.55 | 20 | |
| 30 | Beech | 15 | 4 | 6 | 7 | 7 | | | | | | | 35 | 7 | 3 | 3S | E | B1 | >20 | Multi-stem form growing on verge alongside West Hoathly Road. | | 11.11 | 388 |
| 31 | English oak | 15 | 7 | 7 | 6 | 5 | 70e | | | | | | | 5 | 5N | E | B1 | >20 | Established tree growing at rear edge of verge alongside West Hoathly Road. Appears to have been crown reduced in recent times. | | 8.40 | 222 | |
| 32 | English oak | 15 | 9 | 8 | 6 | 8 | | 55e | 30e | | | | | 3 | 3W | E | B1 | >20 | Twin-stem from ground level. Both stem partially smothered in ivy. Growing on bank adjoining West Hoathly Road. | | 7.52 | 178 | |
| 33 | English oak | 10 | 5 | 6 | 4 | 6 | 45e | | | | | | | 4 | 4W | E | B1 | >20 | Growing on bank adjoining West Hoathly Road. Branches within ivy. Some dead branches covered in ivy. | | 5.40 | 92 | |
| 34 | Mixed broadleaf hedgerow | 1.2av | | | 1av | | | 5av | | | | | | 0 | - | E | C2 | >10 | Established hedgerow of relatively young saplings. Mixture of hawthorn, blackthorn, hazel and holly. | | 0.60 | 1 | |
| 35 | English oak | 16 | 3 | 5 | 4 | 3 | 59 | | | | | | | 3 | 3E | E | C1 | >10 | Growing amidst dense bramble. Extensive crown dieback but some regeneration. | | 7.08 | 157 | |
| 36 | Row of mixed broadleaves | 17av | | | 8av | | | 65av | | | | | | 5 | 5E | E | B2 | >20 | Row of established trees on western side of West Hoathly Road. Predominantly ash with some English oak. Ash showing signs of Ash Dieback. Understory of hazel and hawthorn. | | 7.80 | 191 | |

| KEY TO TREE SCHEDULE | |
|---|--|
| Column Heading | Explanation |
| Tree No. | Unique number corresponding with number on plan |
| Species | English names |
| Ht (m) | Height in metres |
| Branch Spread | Crown radius in metres to cardinal points of the compass |
| Stem Dia | All measurements conform to Annex C of BS 5837:2012 |
| | Single stem - Stem diameter in centimetres measured at 1.5m above ground level. |
| | Multi-stemmed tree with 2 to 5 stems - Diameter of each stem |
| | Multi-stemmed tree with more than 5 stems - Average stem diameter and number of stems |
| Height of crown clearance | Height in metres between the ground and underside of canopy |
| Height of first major branch and direction of growth | Height from ground level to base of first major branch and the approximate direction of growth |
| Abbreviations as suffix to a dimension | Suffix 'v' denotes an average dimension |
| Age Class | Age Class definitions: Y = Young S = Semi-mature E = Early mature M = Mature O = Over mature |
| Category grading and Estimated remaining Contribution (yrs) | Summary of BS 5837:2012 categorisation: 1. Trees unsuitable for retention: U = those in such a condition that they cannot realistically be retained as living trees in the context of the current land use for longer than 10 years 2. Trees to be considered for retention: A1, 2 or 3 = trees of high quality (substantial contribution >40 yrs) B1, 2 or 3 = trees of moderate quality (significant contribution >20 yrs) C1, 2 or 3 = trees of low quality (but adequate, ie >10 yrs in young trees - until new planting can be established) Note: Useful estimated remaining contribution of the tree or tree group based on figures stated in BS5837:2012 Brief description including physiological and structural defects Describes current arboricultural requirement for the tree in its current context Radius of minimum root protection area in metres calculated from section 4.6 and Annex D of BS5837:2012 Total area of minimum root protection area extrapolated from root protection radius |
| Estimated remaining contribution | |
| Condition | |
| Preliminary management recommendations | |
| Root Protection Radius | |
| Root Protection Area | |



NORTH

05m10m25m50m

NOTES

1. This drawing has been prepared solely for the purpose of seeking planning approval. It should not be used for any other purpose.

2. The original of this drawing was produced in colour - a monochrome copy should not be relied upon.

3. Scale for planning purposes only.

4. All dimensions to be checked on site.

5. The copyright of this document resides with Keen Consultants unless assigned in writing by the company.

6. Details shown on this drawing are devised with reference to BS5837:2012: Trees in relation to design, demolition and construction - Recommendations.

7. Tree Preservation Order based on Mid Sussex District Council Tree Preservation Order (TPO) Map.

8. Ancient and Semi-Natural Woodland & Priority Habitat Inventory - Deciduous Woodland (England) based on information from MAGIC website.

9. Outline survey based on AT Land Surveys drawing number 2011-51 Rev A.

10. Where trees were not identified on the topographical survey they have been plotted by eye.

KEY

1. Trees to be considered for retention: (Coloured line indicates extent of canopy)

Tree Category A 1.2 or 3

- Trees of high quality

Tree Category B 1.2 or 3

- Trees of moderate quality

Tree Category C 1.2 or 3

- Trees of low quality

2. Trees unsuitable for retention: (Coloured line indicates extent of canopy)

Tree Category U

- Trees that cannot realistically be retained due to their condition

3. Protection Areas:

Root Protection Area (RPA) (where RPAs overlap the shading will appear darker)

4. Tree/Hedge numbering:

31

Tree number

- refer to schedule for information

Tree Preservation Order (TPO) group

15m buffer to Ancient Woodland

5. Designations:

Ancient and Semi-Natural Woodland

Priority Habitat Inventory

- Deciduous Woodland (England)

0

Preliminary issue

23.03.22

Rev

Description

Date

KEEN

CONSULTANTS

The Studio, Timbers,
Gables Road, Church Crookham
Fleet, Hampshire
GU52 6QY
T 01252 850096
mail@keenconsultants.co.uk
keenconsultants.co.uk

Keen Consultants is a trading name of Keen (Europe) Limited. Registered No: 12641584
Registered office: 4 Sudley Road, Bognor Regis, West Sussex, PO21 1EU

Client

DEVINE HOMES PLC

Project

LAND AT WEST HOATHLY ROAD,
EAST GRINSTEAD

Title

TREE CONSTRAINTS PLAN

Date

MARCH 2022

Scale

1:500@A1

Drawn by

ML

Checked by

JTK

Drawing Number

1857-KC-XX-YTREE-TCP01Rev0