

# YOUR COUNCIL TAX 2023/24



# Contents

[Introduction](#)

[Our budget](#)

[An increase of 4.99%  
for 2023/24](#)

[Capital investment](#)

[Help for households  
experiencing financial  
pressures paying](#)

[Council Tax](#)

[Charges per  
Council Tax Band](#)

## Introduction

I know that these are tough times for everyone and fully recognise the strain that household budgets are under in West Sussex, with soaring inflation and big rises in the cost of living. These tough times are also impacting the County Council. We must continue to look after the young, the old and the vulnerable to ensure that West Sussex remains a great place to live and work, with a strong and vibrant economy. Our adults' and children's services are particularly under pressure, as we need to fund support for people with increasingly complex needs.

We have agreed to spend a total of £1.86 billion to deliver day-to-day services in the coming year to a growing population of 882,676 residents and 37,400 businesses across our county.

The budget will allow us to continue to deliver Our Council Plan priorities and support those most in need, whilst investing in services used by all who live, work, volunteer and visit our county.

To fund our budget for next year, we need to increase the County Council's element of council tax by 2.99% – plus an additional 2% for adult social care – making a total increase of 4.99%. This will see an increase for an average Band D property of £77.67 per year or around £1.50 per week. The increase enables us to balance our budget and protect vital services.

I truly appreciate the pressures that residents are under and would encourage anyone struggling to pay their council tax to contact their local district or borough council to see if they are eligible for a discount or exemption.

Thank you.



**Paul Marshall**  
Leader of West Sussex  
County Council

# Our budget

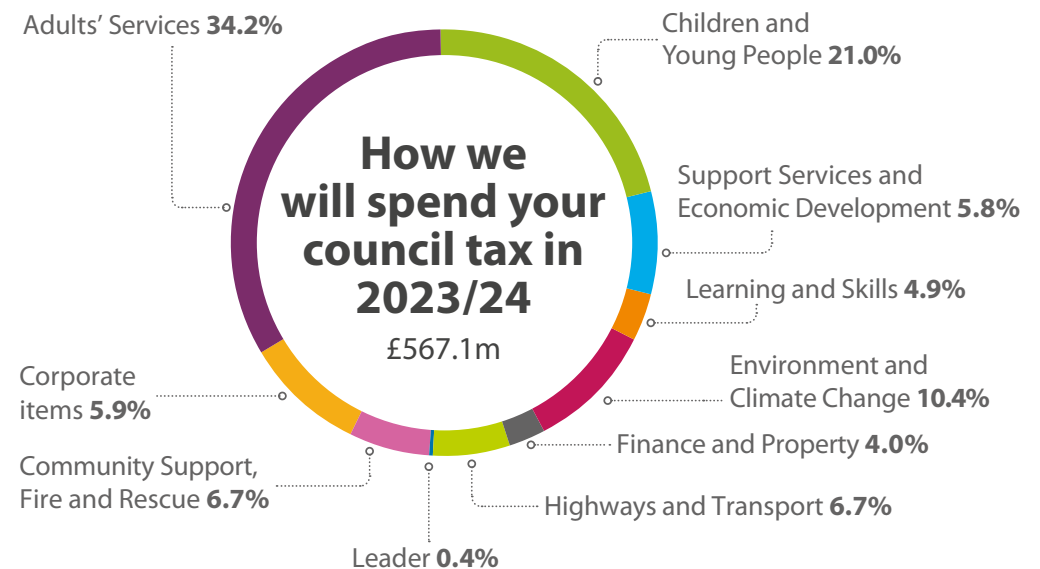
Services	2022/23 Total £m	2023/24 Total £m
Adults' Services	393.4	434.7
Children and Young People	166.5	174.1
Community Support, Fire and Rescue	52.0	55.9
Environment and Climate Change	74.1	84.3
Finance and Property*	32.3	35.8
Highways and Transport	62.7	79.7
Leader	3.1	3.2
Learning and Skills	820.6	883.4
Public Health and Wellbeing	21.2	23.0
Support Services and Economic Development	44.2	43.7
<b>Spending on services</b>	<b>1,670.1</b>	<b>1,817.8</b>

Corporate items	2022/23 Total £m	2023/24 Total £m
Capital financing	36.5	31.6
Contingency	9.2	13.0
Additional investment into Highways, Roads, Skills and Economic Development	-	5.0
<b>Spending on corporate items</b>	<b>45.7</b>	<b>49.6</b>

Gross expenditure	2022/23 Total £m	2023/24 Total £m
Contribution to/from reserves and balances	3.3	-0.6
Fees, charges and other income	-198.2	-214.4
Service Specific Government Grants (incl. DSG)	-872.6	-943.6
<b>Net expenditure</b>	<b>648.3</b>	<b>708.8</b>

The money comes from:	2022/23 Total £m	2023/24 Total £m
Business Rates	-87.2	-97.1
New Homes Bonus Grant	-2.0	-1.2
Social Care Support Grant	-25.8	-42.1
Services Grant	-5.5	-3.1
Collection Fund Surplus (-)/Deficit	4.8	1.8
Council tax	-532.6	-567.1
<b>Funding of net expenditure</b>	<b>648.3</b>	<b>708.8</b>

\*This includes levies for Flood Defences (£0.356m), Sussex Inshore Fisheries (£0.367m), Chichester Harbour Conservancy (£0.221m) and Littlehampton Harbour Board (£0.201m)



How spending has changed	Total £m
<b>2022/23 net budget</b>	<b>648.3</b>
Inflation (excluding schools)	51.9
Demographic and other service pressures	21.1
Movement in reserves	-2.9
Efficiency and other savings	-9.6
<b>2023/24 net budget</b>	<b>708.8</b>
Year-on-year percentage change	<b>9.3%</b>

## An increase of 4.99% for 2023/24

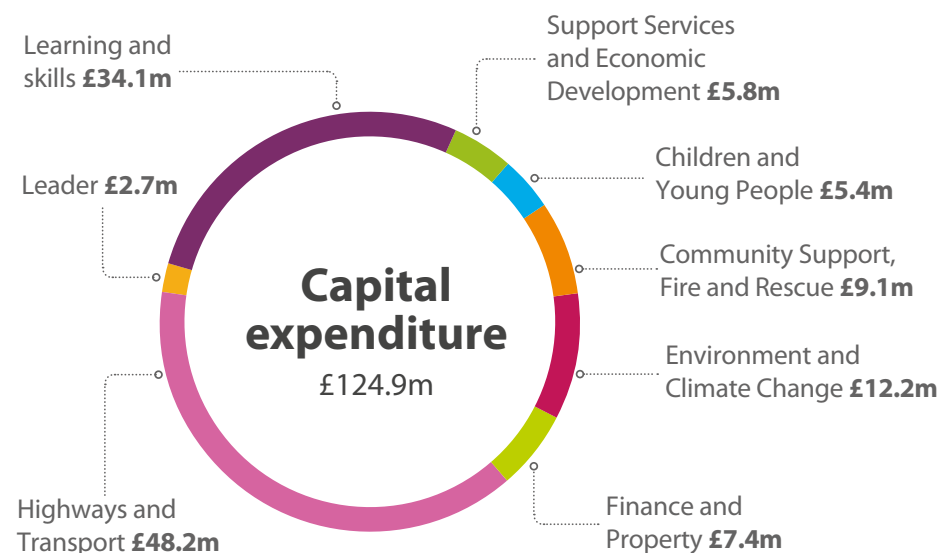
The County Council's element of your council tax will increase by 4.99% in 2023/24, which for an average Band D household is an increase equivalent to around £1.50 per week. The increase is made up of a rise of 2.99% for the county's core element of the council tax, plus 2.0% specifically for adult social care as per the offer from the Secretary of State for Housing, Communities and Local Government.

The total increase of 4.99% is within the maximum permissible before a local referendum is required. In accordance with the Council Tax (Demand Notices) (England) (Amendment) Regulations 2022, the Adult Social Care Precept is detailed separately on the council tax bill and shows the amount charged since the precept was introduced in 2016/17. Further information on the Adult Social Care Precept and how it is calculated are available at: [westsussex.gov.uk/about-the-council/finance-and-budgets](https://westsussex.gov.uk/about-the-council/finance-and-budgets)

## Capital investment

In addition to the £1.86bn gross expenditure on day to day services, there is also planned investment in capital projects for 2023/24 of £124.9m, including the following:

- £12m for environmental projects to help reduce the County's carbon footprint;
- £48m in highways and transport reflecting its importance for economic growth;
- £34m investment in the County's schools and early year settings; and
- £5m in accommodation to support vulnerable children.



## Help for households experiencing financial pressures paying Council Tax

Funding of £0.4 million has been allocated by West Sussex County Council to provide support for households experiencing financial pressures in paying Council Tax in the year ahead.

The funds will provide up to £25 for working age residents claiming Council Tax reduction relief.

Administered by districts and boroughs, the funding means that we can continue distributing additional discretionary relief for a further year.

This support is in addition to the Council Tax Support funding of £100m recently announced by the Government to support the most vulnerable households in England.

Additionally, West Sussex County Council has information on a range of topics, from money management to energy saving, food and household costs, job seeking and benefits guidance, including where to get further support from libraries or via the Community Hub, for those struggling with fuel or food bills; [westsussex.gov.uk/costofliving](https://www.westsussex.gov.uk/costofliving)

## Charges per Council Tax Band

The 2023/24 County Council charges per band are shown below. There will also be charges from your district or borough council, Sussex Police & Crime Commissioner and your town or parish council (if you have one). Please see your bill for your final council tax figures.

Band	Property value (as of April 1991)	County Council charge 2023/24
A	Up to £40,000	£1,088.94
B	£40,000 to £52,000	£1,270.43
C	£52,000 to £68,000	£1,451.92
D	£68,000 to £88,000	£1,633.41
E	£88,000 to £120,000	£1,996.39
F	£120,000 to £160,000	£2,359.37
G	£160,000 to £320,000	£2,722.35
H	Over £320,000	£3,266.82

The council tax you pay is based on the value of your house in 1991. If you have any questions about your banding please contact the Valuation Office Agency at [gov.uk/challenge-council-tax-band](https://www.gov.uk/challenge-council-tax-band) or phone 03000 501501.

If you have any questions about the County Council budget please write to: **Director of Finance and Support Services**

**West Sussex County Council**  
County Hall, Chichester, PO19 1RG.

Email: [counciltax@westsussex.gov.uk](mailto:counciltax@westsussex.gov.uk) or phone 01243 777100.

Further details on the County's 2023/24 budget are available at: [westsussex.gov.uk/about-the-council/finance-and-budgets](https://www.westsussex.gov.uk/about-the-council/finance-and-budgets)