

## **APPENDIX 1**

# Sayers Common Garden Village



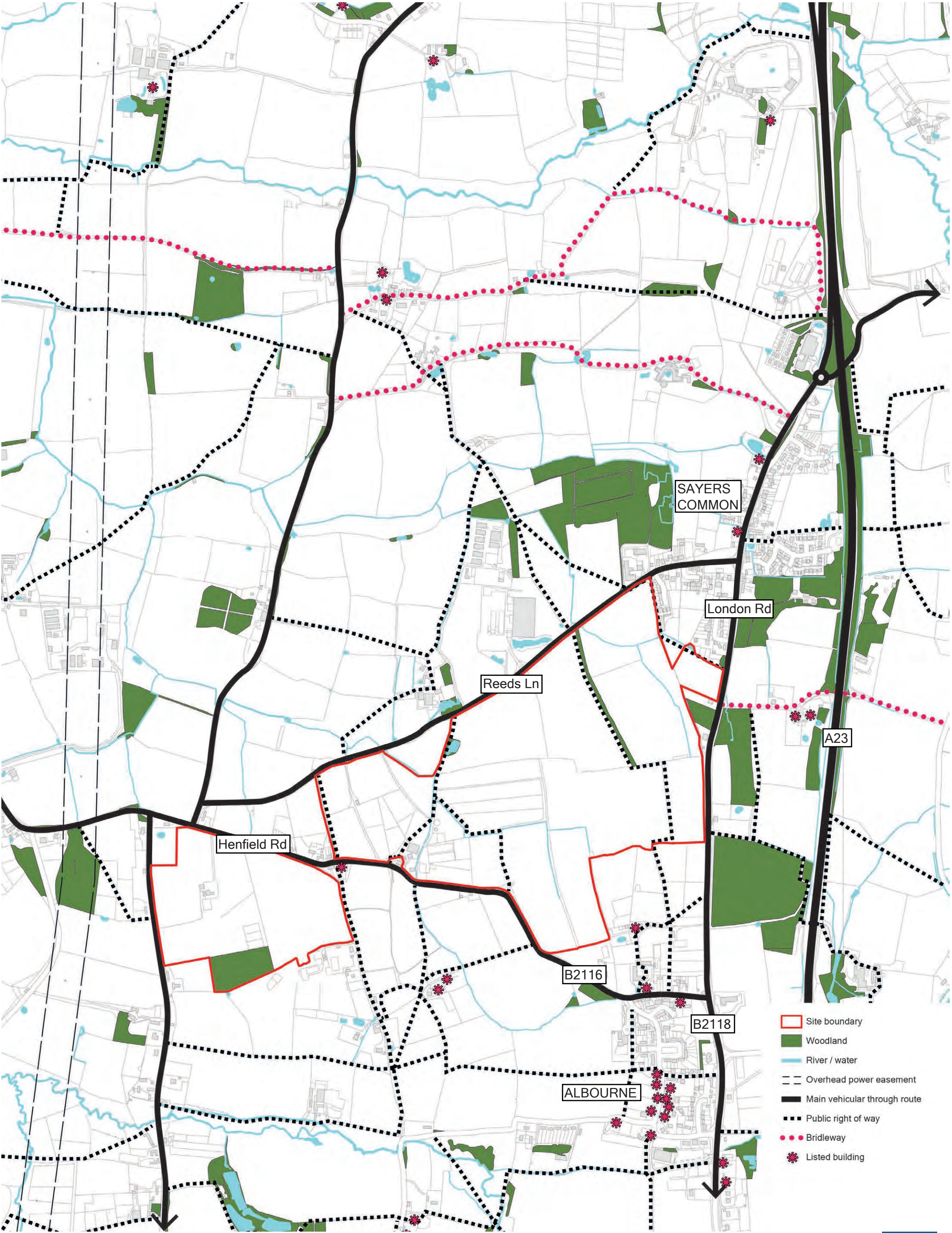


# SAYERS COMMON GARDEN VILLAGE



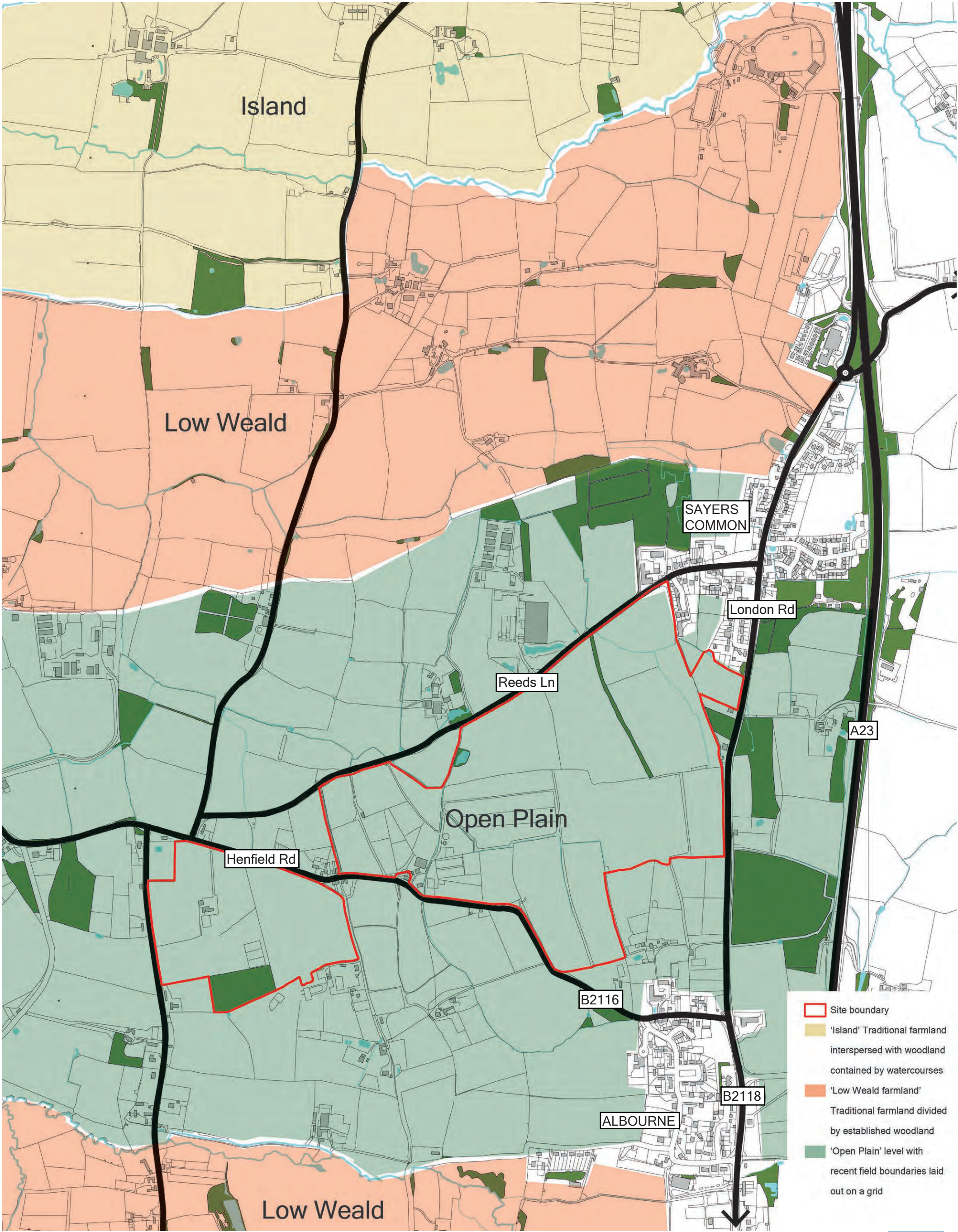
NOTE: THE PROPERTY OF THIS DRAWING AND DESIGN IS VESTED IN VECTOS (SOUTH) LTD.  
IT MUST NOT BE COPIED OR REPRODUCED IN ANY WAY WITHOUT THEIR PRIOR WRITTEN CONSENT.



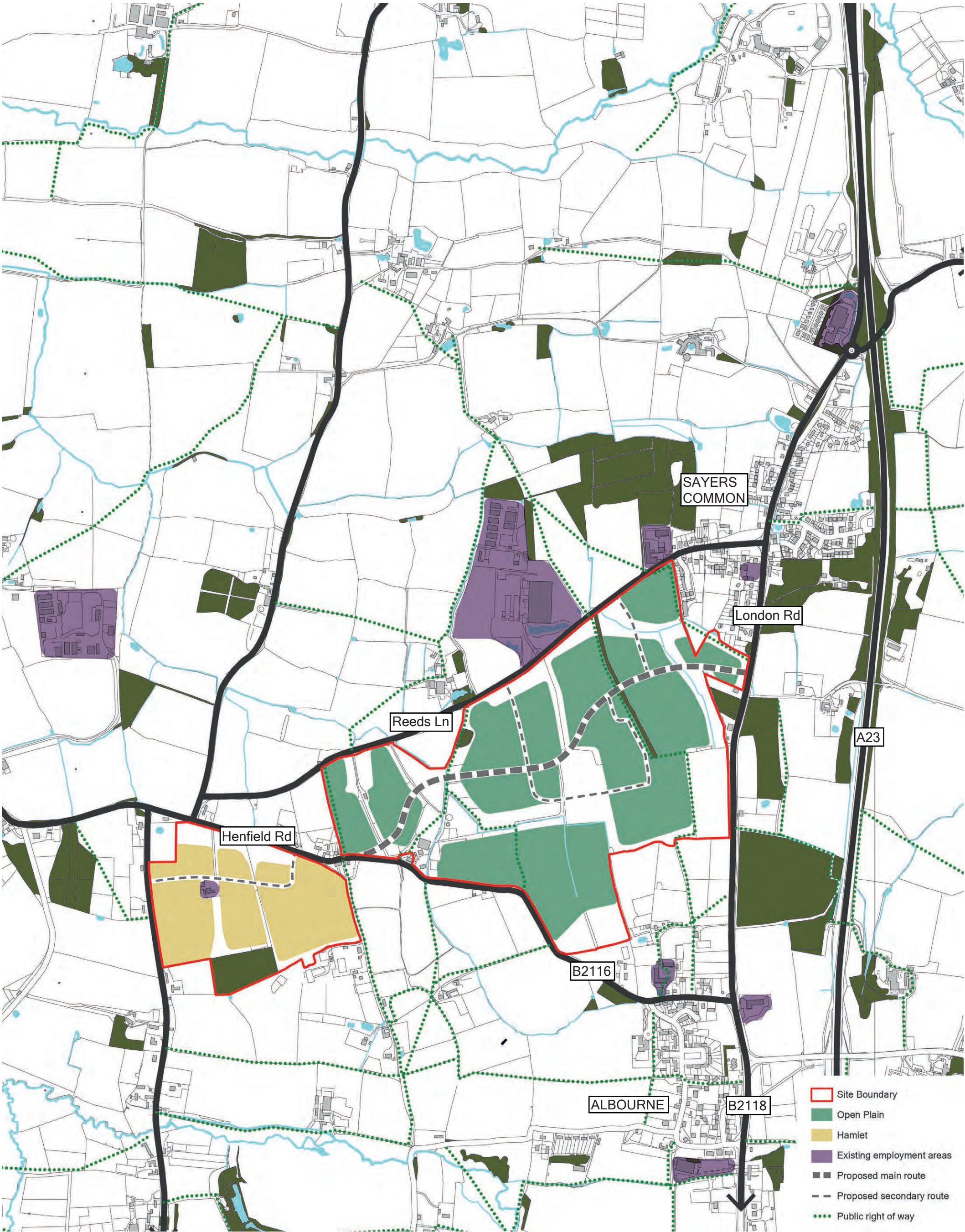


SITE FEATURES AND EXISTING ROUTES



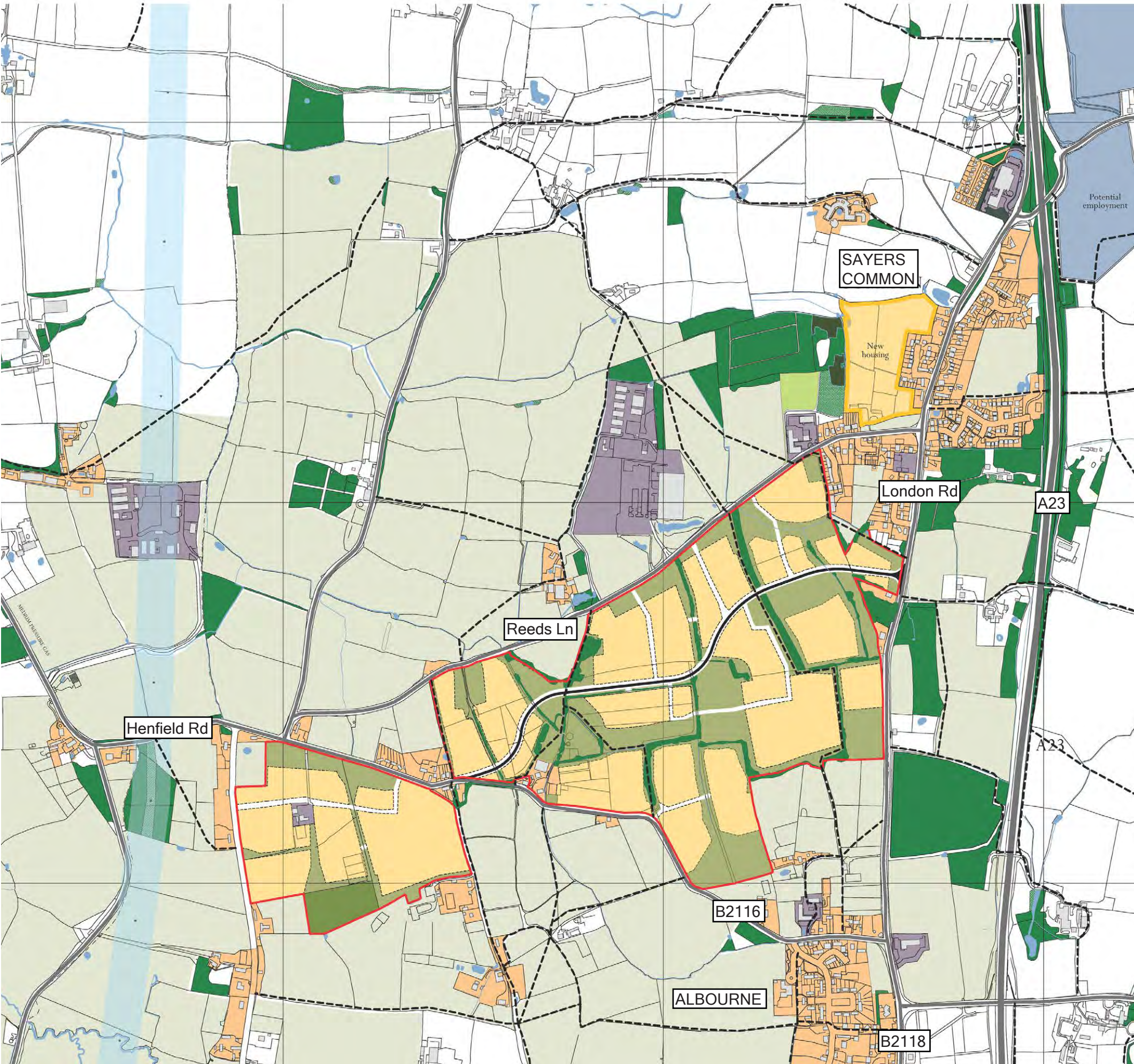






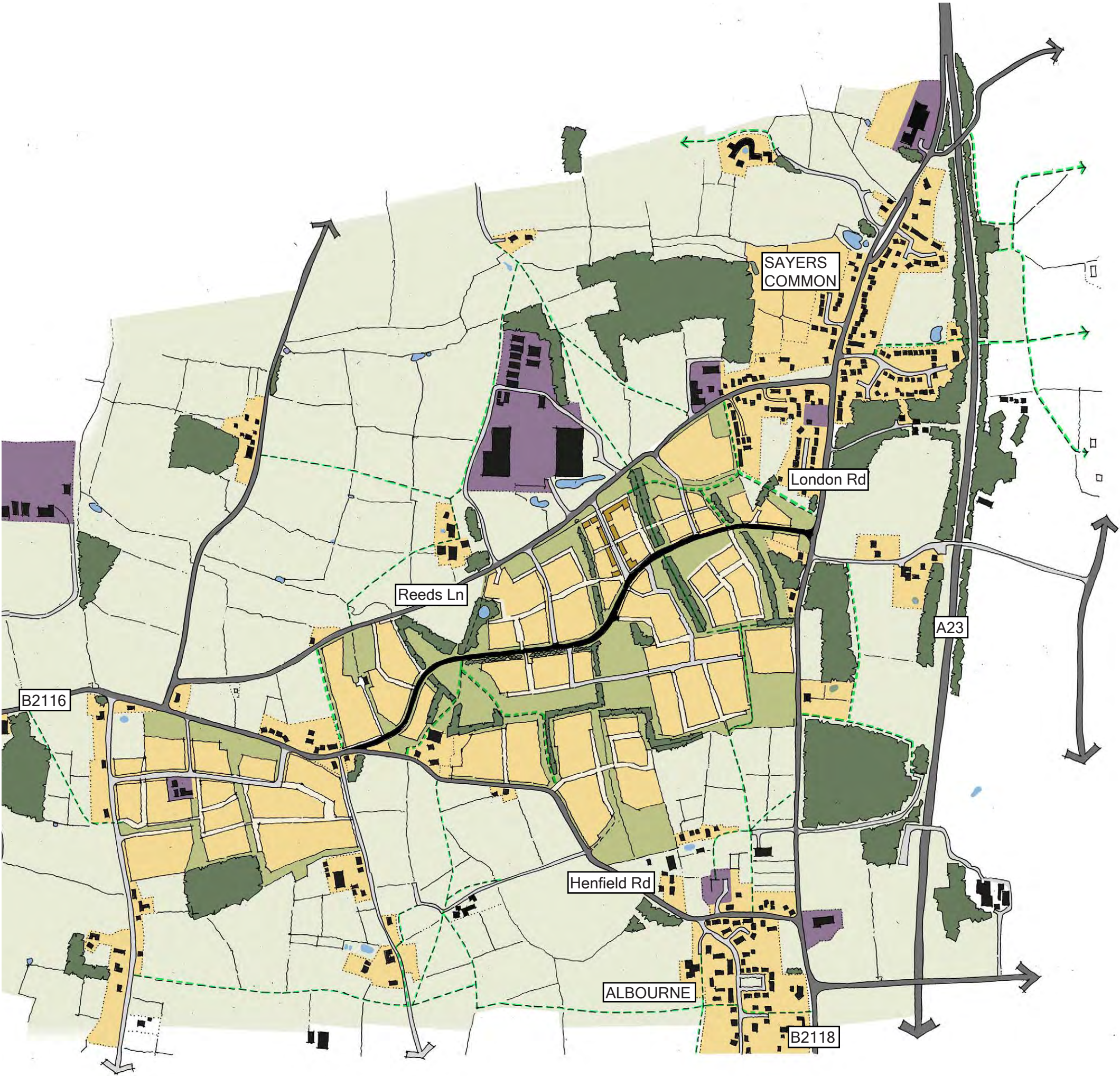


# SAYERS COMMON GARDEN VILLAGE



- Existing development
- Developable land, which includes residential, 2FE primary school, mixed use commercial, B1
- New housing
- Existing employment
- Potential commercial development
- Open space
- Existing main route
- Proposed new road, facilitating traffic calming on Reeds Lane and Henfield Road
- Public right of way
- Existing vegetation / woodland
- Retained agricultural land
- Powerline easement





Sayers Common Garden Village

Residential	Up to 2,000 dwellings (30-40dph)
Retail	2,000-4,000 sq m
Commercial	5,000-9,000 sq m
2FE Primary School A Children's nursery A Community facility	2HA Potential Doctor's surgery, Community hall



