

Site Allocations Development Plan Document

DPD3a - Main Modifications – Policy Maps:

Ardingly update to reflect MM1

East Grinstead update to reflect MM2

November 2021

The maps below incorporate the Sites Allocations changes made since the previous (Regulation 19) draft and subsequent Submission to the Secretary of State.

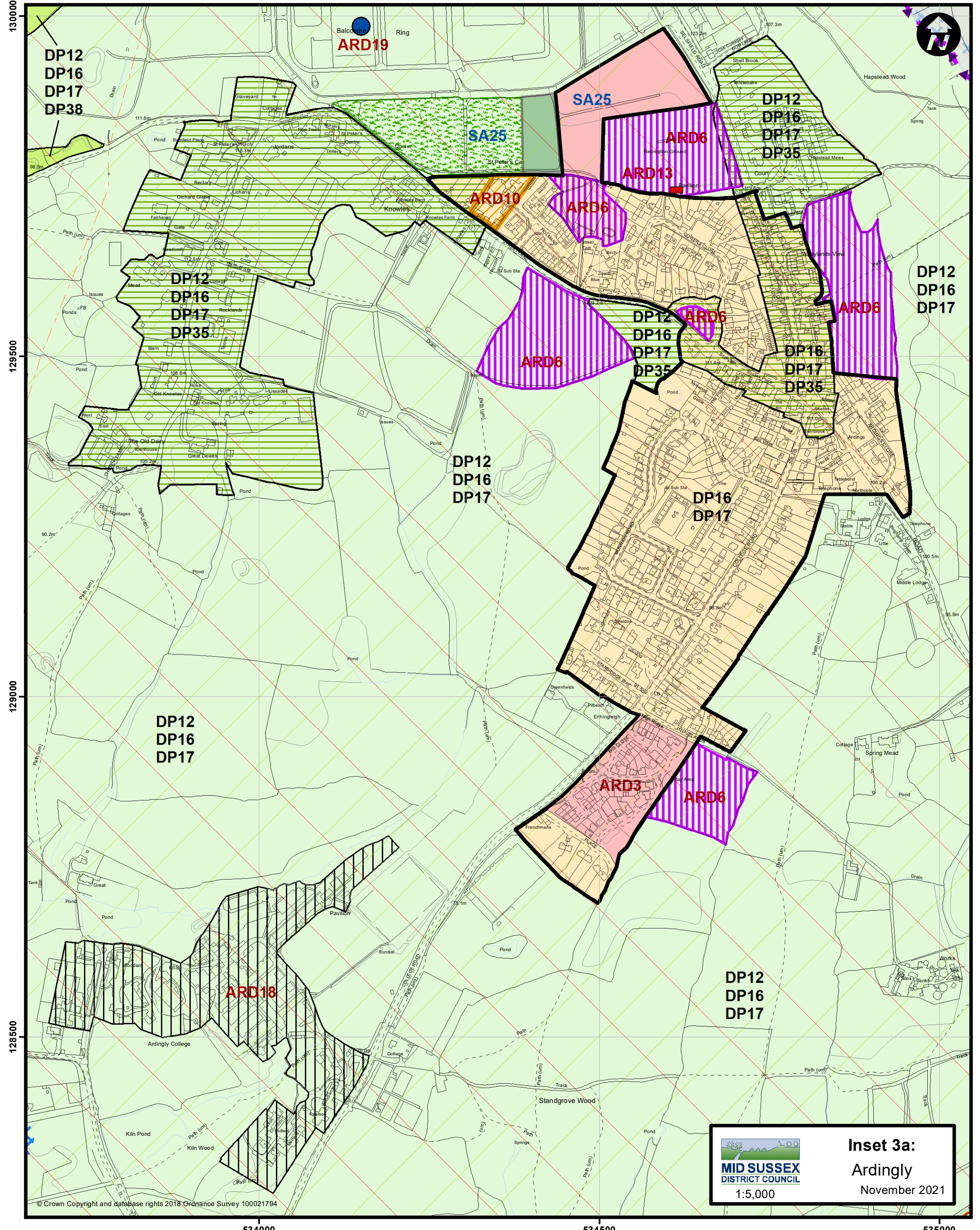
The Policy Map which forms part of the Development Plan Document will be updated to incorporate the changes shown on the maps below at Ardingly and East Grinstead.

Main Modifications

The changes to the maps are as a result of Main Modifications (MM) which have been suggested by the Inspector to ensure the Sites DPD is legally compliant and sound.

Changes to the Ardingly map are to reflect MM1 (reduction from 70 to 35 dwellings) which has resulted in a reduction in the size of the site area shown for development for Policy SA25: Land West of Selsfield Road, Ardingly.

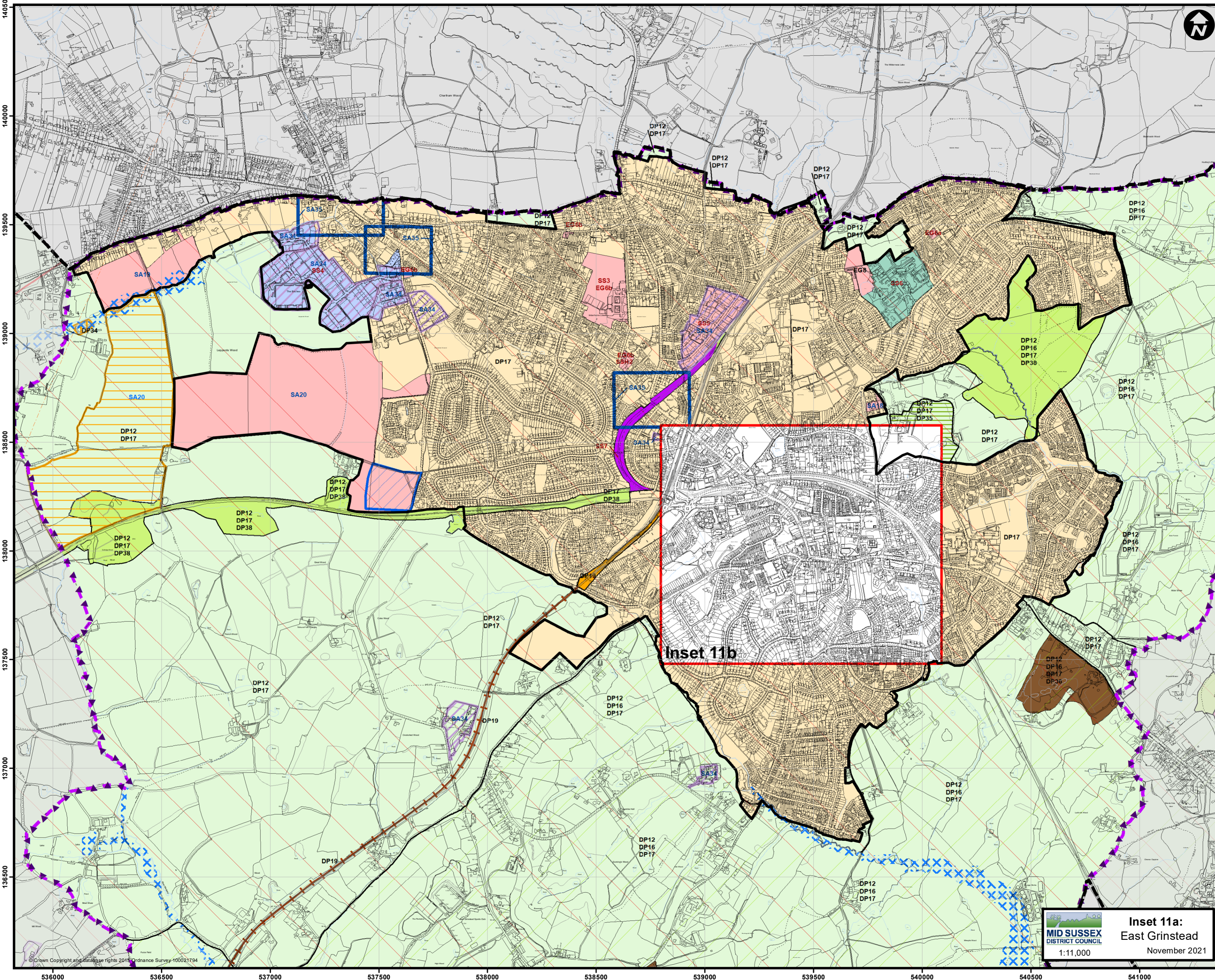
Changes to the East Grinstead map are to reflect MM2 (to define a minimum number of C2 dwellings) and defines an area for older persons' dwellings on the site.



Inset 3a:
Ardingly
 November 2021

MID SUSSEX DISTRICT COUNCIL
 1:5,000

	District Boundary		Primary School		Housing Allocation		Informal Open Space		High Weald AONB
	Neighbourhood Plan Areas		Pavilion		Car Parking		Strategic landscaping		Built up Area Boundary
	Parish Boundary		Local Green Spaces		Local Wildlife Sites	DISTRICT PLAN POLICY NUMBERS			
	Policy Location		FloodZones		Ashdown Forest 7km zone of influence				NEIGHBOURHOOD PLAN POLICY NUMBERS
	Ardingly College		Conservation Area		Protection and Enhancement of Countryside	SITE ALLOCATIONS DPD POLICY NUMBERS			



DISTRICT PLAN & LOCAL PLAN POLICY NUMBERS

NEIGHBOURHOOD PLAN POLICY NUMBERS OR SMALL SCALE HOUSING ALLOCATIONS DEVELOPMENT PLAN

SITE ALLOCATIONS DPD POLICY NUMBERS

- District Boundary
- Neighbourhood Plan Areas
- Parish Boundary
- Ashdown Forest 7km Zone of Influence
- FloodZones
- Bluebell Railway Extension
- High Weald AONB
- Conservation Area
- Housing Allocation
- Park or Garden of Historic Interest
- Local Wildlife Sites
- Bluebell Railway (new station site)
- Built up Area Boundary
- Protection and Enhancement of Countryside
- St Margarets Loop
- Birches Industrial Estate
- Queen Victoria Hospital
- Highways Safeguarding
- Existing Employment Sites (SA34)
- Area of search for potential SANG provision
- Ancient Monuments
- Care Community (C2 Use Class)

**Inset 11a:
East Grinstead
November 2021**

MID SUSSEX DISTRICT COUNCIL
1:11,000

© Crown Copyright and database rights 2015 Ordnance Survey 100021794