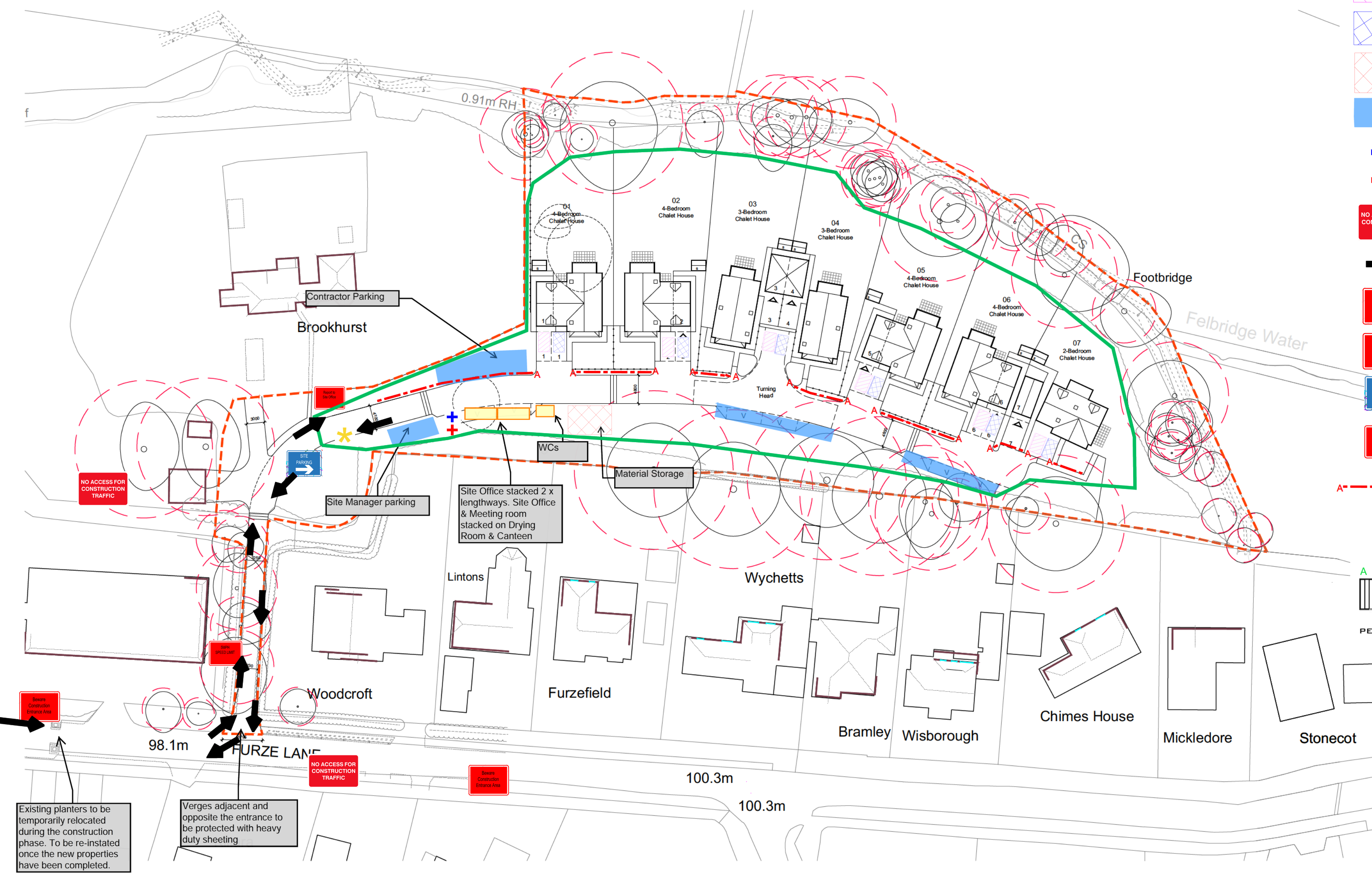
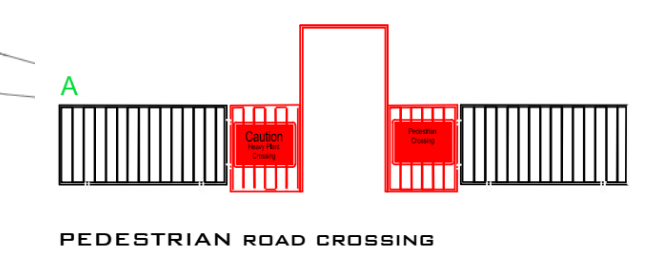


-  Site hoarding/Herras fencing
-  Banksman & Wheel Washing facility
-  Site Office & Welfare
-  Loading Bays
-  Skip Area
-  Material Storage
-  Contractor Parking
-  Fire Assembly
-  First Aid Point
-  NO ACCESS FOR CONSTRUCTION TRAFFIC Sign
-  Vehicular Movement in/out of site
-  Beware Construction Entrance Area Sign
-  SPEED LIMIT Sign
-  SITE PARKING Sign
-  Report to Site Office Sign
-  Pedestrian Routes with crossing points (as below)



Existing planters to be temporarily relocated during the construction phase. To be re-instated once the new properties have been completed.

Verges adjacent and opposite the entrance to be protected with heavy duty sheeting