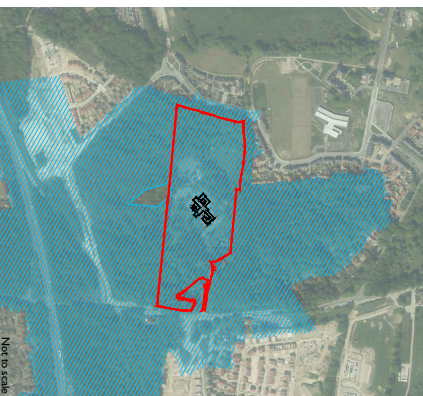


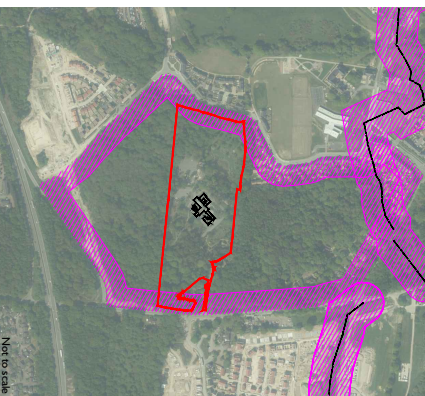
Ancient Woodland with 15m offset:











Buffer zone to dwellings:

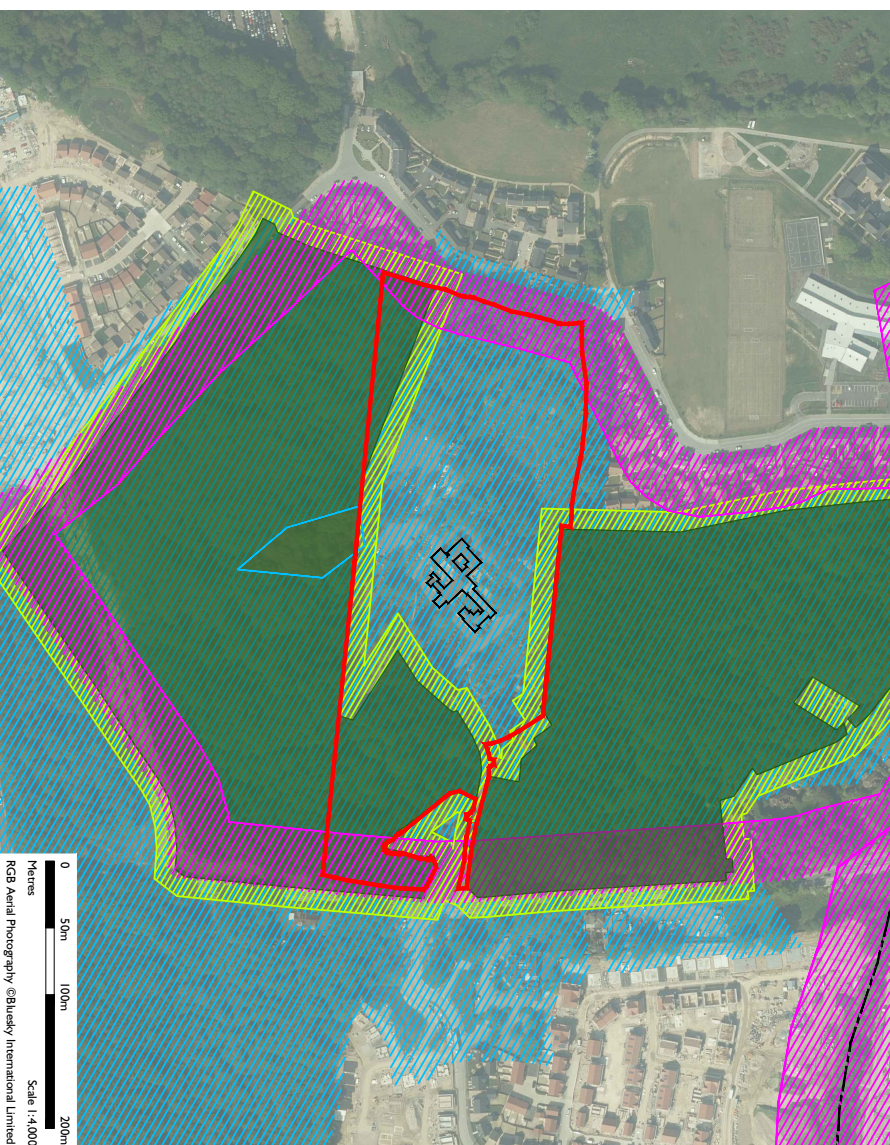


Buffer zone to highways (roads and footpaths):



KEY

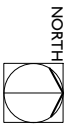
-  Crematorium boundary
-  Footpath
-  Ancient Woodland Buffer Zone
-  Ancient Woodland
-  15m standoff to Ancient Woodland
-  CREMATOIRA ACT 1902 Buffer Zones
-  182.88m (200yd) standoff to dwellings
-  43.72m (50yd) standoff to highways



0 50m 100m 200m
Metres
Scale 1:4,000
RGB Aerial Photography ©Bluekey International Limited



0 50m 100m 150m
Metres
Scale 1:2,500
RGB Aerial Photography ©Bluekey International Limited



rev	description	date	by	chk
-	FIRST ISSUE	2021-03-26	MH	MG

project: **TURNERS HILL CREMATORIUM**

client: **HARTMIRE INVESTMENTS LTD**

drawing title: **SURREY AND SUSSEX CREMATORIUM CONSTRAINTS**

drawing number	revision	status	scale
917-M-02	-	PLANNING	Varies@A3

TEL: 01723 340140 EMAIL: ENQUIRIES@INDIGOLANDSCAPE.CO.UK WWW.INDIGOLANDSCAPE.CO.UK
INDIGO LANDSCAPE ARCHITECTS LIMITED