



1. Pedestrian link to SANG
2. Footpath (3km)
3. Wildlife pond
4. Native tree planting
5. Scrub planting
6. Wildflower meadow
7. Timber benches
8. Potential lookout tower
9. Post and rail fence to SANG boundary
10. Potential location for SANG car park (1 location to be selected)

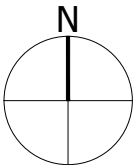
The scaling of this drawing cannot be assured

Revision	Date	Drn	Ckd
G	29.04.20	SP	JdH

LEGEND

	Draft Allocation	45.85 Ha
	Site Boundary	
	Additional Land	71.32 Ha
	Proposed SANG area (including strategic SANG)	
	Land Proposed for Imberhorne School Expansion	
	Vehicular access point	
	Pedestrian/ cycle link	
	Residential development	
	Local Centre	
	2FE primary school and community building	
	Care community	
	Public open space	
	Allotments	
	Areas for attenuation	
	Proposed areas for formal play	
	Tree and hedgerow planting (existing and proposed)	
	Street Tree Planting	
	Informal footpath route	
	Retained access to existing farmhouse and bridleway	
	PRoW: Worth Way	

Project
**Imberhorne Farm
East Grinstead**
Drawing Title
Concept Masterplan



Date 25.02.20	Scale 1:5000 @ A2	Drawn by KT	Check by CDB
Project No 25626	Drawing No 9305	Revision G	

DRAFT **BARTON WILLMORE**

Town Planning • Master Planning & Urban Design • Architecture •
Landscape Planning & Design • Infrastructure & Environmental Planning •
Heritage • Graphic Communication •
Communications & Engagement • Development Economics

bartonwillmore.co.uk

ISO 9001
Certified

Offices at Birmingham Bristol Cambridge Cardiff Ebbw Vale Edinburgh
Glasgow Leeds London Manchester Newcastle Reading Southampton