

## Part 1

**This application cannot be used to vary the licence so as to extend the period for which the licence has effect or to vary substantially the premises to which it relates. If you wish to make that type of change to the premises licence, you should make a new premises licence application under section 17 of the Licensing Act 2003.**

Serial Number:

I/We being the premises licence holder, apply to vary a premises licence under section 34 of the Licensing Act 2003 for the premises described in Part 1 below

Name(s) of applicant(s):

Premises licence number

### The Premises

Postal address of premises or, if none, ordnance survey map reference or description:

Postcode:

Tel: (at premises)

Email:

Non-domestic rateable value of club premises.

## The Current Premises Licence

Please describe briefly, the nature of the proposed variation

Provision of live and recorded music in the garden.

Extension to provision sales of alcohol Thursday - Sunday.

Provision of Wrestling in the Theatre.

Update to floor plan (attached).

I have attached the premises licence (or relevant part of it)

Yes

## Part 2

### Applicant Details

Current postal address if different from premises address:

Postcode:

Tel:

Email:

## Part 3

### Operating Schedule

Do you want the proposed variation to have effect as soon as possible?

Yes

If 5,000 or more people are expected to attend the premises at any one time, please state the number expected to attend.

Describe the premises. For example the type of premises, its general situation and layout and any other information which could be relevant to the licensing objectives. Where your application includes off-supplies of alcohol and you intend to provide a place for consumption of these off-supplies you must include a description of where the place will be and its proximity to the premises.

Description:

Theatre with bar and coffee shop. Additional studio spaces for hire.

Garden space, where this variation is applicable to is a space with tables and chairs for people to enjoy a quiet drink with mostly background music during the day and occasional singer-songwriter/acoustic style music performances that we would normally site indoors in the main coffee shop/bar area, we are however looking for an option to bring them outdoors on the odd-occasion the weather permits.

Extension of the sale of alcohol Thursday - Sunday to allow flexibility after shows and events and in addition to provide the charity with more supplementary revenue. Although in reality this would rarely be utilised until the requested time, this would prevent us requiring application for a TEN.

Wrestling in the theatre, which we have previously requested TENs for, this we would like to become part of our more regular programme up to two or three times a year.

An update to our floor plan is also included representing a fully up-to-date layout.

Therefor please rename on our license the following rooms:  
Meeting Room to Studio 3  
Rehearsal Room to Dance Studio  
Gallery is now split into Studio 1 and Studio 2 (see plan)  
Auditorium to Theatre

and  
"Cafe Reception" would be best renamed to "Pavilion & Foyer" under our current naming scheme, subject your naming method and approval.

NB: The "Studio" is now no longer part of our complex and is now rented to Sussex Police as part of their contact point in East Grinstead.

## Activities

Please complete those parts of the Operating Schedule below which would be subject to change if this application to vary is successful.

### Provision of regulated entertainment

- a) plays
- b) films
- c) indoor sporting events
- d) boxing or wrestling entertainments
- e) live music
- f) recorded music
- g) performances of dance
- h) anything of a similar description to that falling within (e), (f) or (g)

**Provision of late night refreshment**

**Supply of alcohol**

## Boxing or wrestling

Standard days and timings. Provide times using 24hour clock.

### Monday

Start

Finish

### Tuesday

Start

Finish

### Wednesday

Start

Finish

### Thursday

Start

Finish

### Friday

Start

Finish

### Saturday

Start

Finish

### Sunday

Start

Finish

Where will the boxing or wrestling entertainment take place? Indoors may include a tent.

Please state type of activity to be authorised, if not already stated, and give relevant further details, for example (but not exclusively) whether or not music will be amplified or unamplified.

Wrestling in the theatre with amplified music.

State any seasonal variations for boxing and wrestling entertainment:

For example (but not exclusively) where the activity will occur on additional days during the summer months.

Non standard timings. Where the club intends to use the premises for the boxing or wrestling entertainment at different times from those listed above, please list:

For example (but not exclusively), where you wish the activity to go on longer on a particular day e.g. Christmas Eve.

# Live Music

Standard days and timings. Provide times using 24hour clock.

## Monday

Start

Finish

## Tuesday

Start

Finish

## Wednesday

Start

Finish

## Thursday

Start

Finish

## Friday

Start

Finish

## Saturday

Start

Finish

## Sunday

Start

Finish

Where will the performance of live music take place? Indoors may include a tent.

Please state type of activity to be authorised, if not already stated, and give relevant further details, for example (but not exclusively) whether or not music will be amplified or unamplified.

Occasional live music in garden, with some amplification.

State any seasonal variations for performing live music: For example (but not exclusively) where the activity will occur on additional days during the summer months.

Expected Spring/Summer only, weather permitting. Not expected during the week, but have requested license for the very odd ad-hoc opportunity if it arises.

Non standard timings. Where the club intends to use the premises for the performance of live music at different times from those listed above, please list: For example (but not exclusively), where you wish the activity to go on longer on a particular day e.g. Christmas Eve.

N/A



## Recorded Music

Standard days and timings. Provide times using 24hour clock.

### Monday

Start

Finish

### Tuesday

Start

Finish

### Wednesday

Start

Finish

### Thursday

Start

Finish

### Friday

Start

Finish

### Saturday

Start

Finish

### Sunday

Start

Finish

Where will the playing of recorded music take place?  
Indoors may include a tent.

Please state type of activity to be authorised, if not already stated, and give relevant further details, for example (but not exclusively) whether or not music will be amplified or unamplified.

Background music for bar/coffee shop tables outside in garden. Volume unable to be heard outside of private garden due to building and good foliage covering around perimeter.

State any seasonal variations for playing recorded music: For example (but not exclusively) where the activity will occur on additional days during the summer months.

Spring/Summer months

Non standard timings. Where the club intends to use the premises for the playing of recorded music at different times from those listed above, please list: For example (but not exclusively), where you wish the activity to go on longer on a particular day e.g. Christmas Eve.

N/A

# Night Refreshment

Standard days and timings. Provide times using 24hour clock.

## Monday

Start

Finish

## Tuesday

Start

Finish

## Wednesday

Start

Finish

## Thursday

Start

Finish

## Friday

Start

Finish

## Saturday

Start

Finish

## Sunday

Start

Finish

Where will the provision of late night refreshment take place?  
Indoors may include a tent.

State any seasonal variations :  
For example (but not exclusively) where late night refreshment is provided on additional days during the summer months.

Non standard timings. Where the club intends to use the premises for the provision of late night refreshment at different times from those listed above, please list:  
For example (but not exclusively), where you wish the activity to go on longer on a particular day e.g. Christmas Eve.

# Supply of alcohol

Standard days and timings. Provide times using 24hour clock.

## Monday

Start

Finish

## Tuesday

Start

Finish

## Wednesday

Start

Finish

## Thursday

Start

Finish

## Friday

Start

Finish

## Saturday

Start

Finish

## Sunday

Start

Finish

Where will the supplied alcohol be consumed? Indoors may include a tent.

State any seasonal variations :  
For example (but not exclusively) where the supply of alcohol will occur on additional days during the summer months.

Non standard timings. Where the club intends to use the premises for the supply of alcohol at different times from those listed above, please list:  
For example (but not exclusively), where you wish the activity to go on longer on a particular day e.g. Christmas Eve.

# Open Hours

Hours club premises are open to the public

## Standard days and timings

### Monday

Start

Finish

### Tuesday

Start

Finish

### Wednesday

Start

Finish

### Thursday

Start

Finish

### Friday

Start

Finish

### Saturday

Start

Finish

### Sunday

Start

Finish

State any seasonal variations :  
For example (but not exclusively) where the supply of alcohol will occur on additional days during the summer months.

Non standard timings. Where you intend to use the premises to be open to the members and guests at different times from those listed above, please list:  
For example (but not exclusively), where you wish the activity to go on longer on a particular day e.g. Christmas Eve.

Please identify those conditions currently imposed on the licence which you believe could be removed as a consequence of the proposed variation you are seeking.

## Adult Entertainment

Please highlight any adult entertainment or services, activities, or other entertainment or matters ancillary to the use of the club premises that may give rise to concern in respect of children.



## Licensing Objectives

### Describe the steps you intend to take to promote the four licensing objectives

General - all four licensing objectives (b,c,d,e):

Please list here steps you will take to promote all four licensing objectives together.

Full CCTV installed across building internally and externally.

Security teams employed at events when deemed necessary.

The prevention of crime and disorder:

Monitoring of customers including alcohol consumption.

Public safety:

All staff are first aid and de-fib trained.

De-fib on site and tested/updated as required.

The prevention of public nuisance:

The protection of children from harm:

Follow and review annually Chequer Mead child protection policy.

All staff are trained in safeguarding.

Many staff are DBS checked.

A number of staff are county licensed chaperones for entertainment.

## Submit & Pay

**IT IS AN OFFENCE, LIABLE ON CONVICTION TO A FINE UP TO LEVEL 5 ON THE STANDARD SCALE UNDER SECTION 158 OF THE LICENSING ACT 2003 TO MAKE A FALSE STATEMENT IN OR IN CONNECTION WITH THIS APPLICATION**

Address for correspondence  
associated with this application

Postcode:

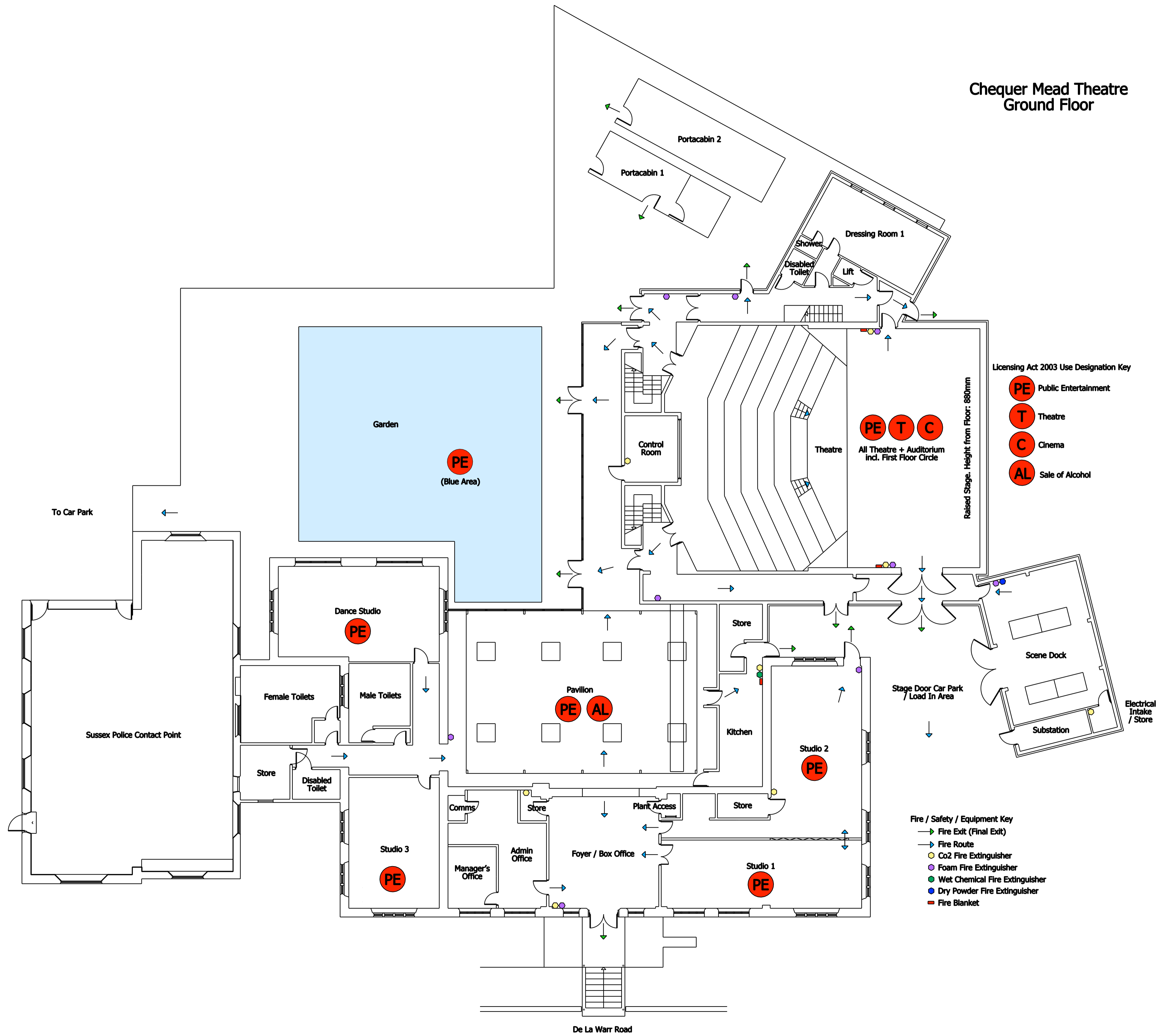
Tel:

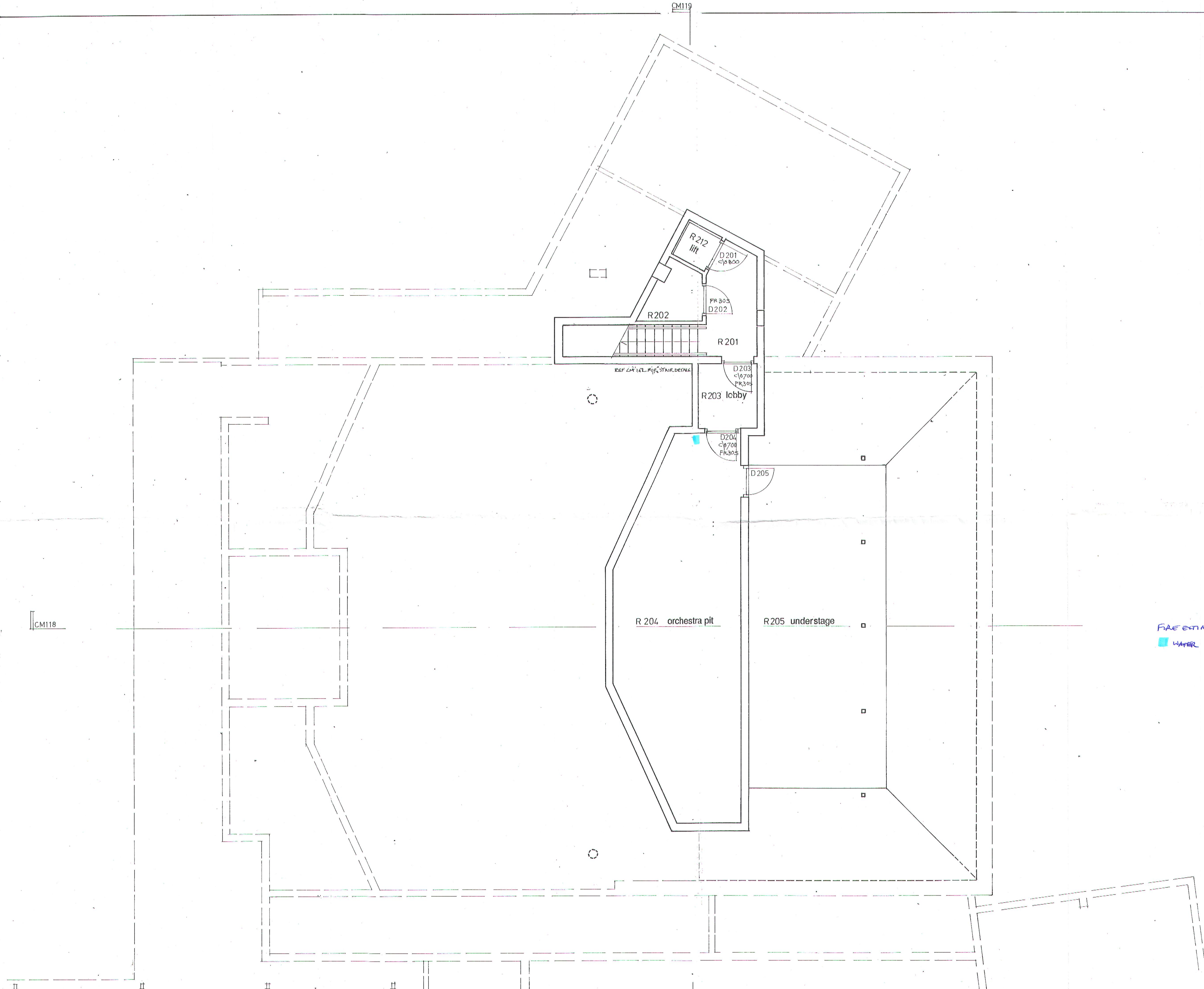
**The email address provided below will receive a copy of this completed application form.**

Email:

Payment amount:

# Chequer Mead Theatre Ground Floor





FIRE EXIT MARKER KEY  
 WATER

I	19/6/95	BUILDING CONTROL ISSUE
H	13/6/95	REVISED TENDER ISSUE
G	22-5-95	WZ'S ADDED - F20'S REVALUED
F	11-5-95	UPPER ROOM ADDED - FIRE, NUMBERED ADDED - CORRIDOR WALLS MARKED
		REVISIONS

TIM RONALDS ARCHITECTS

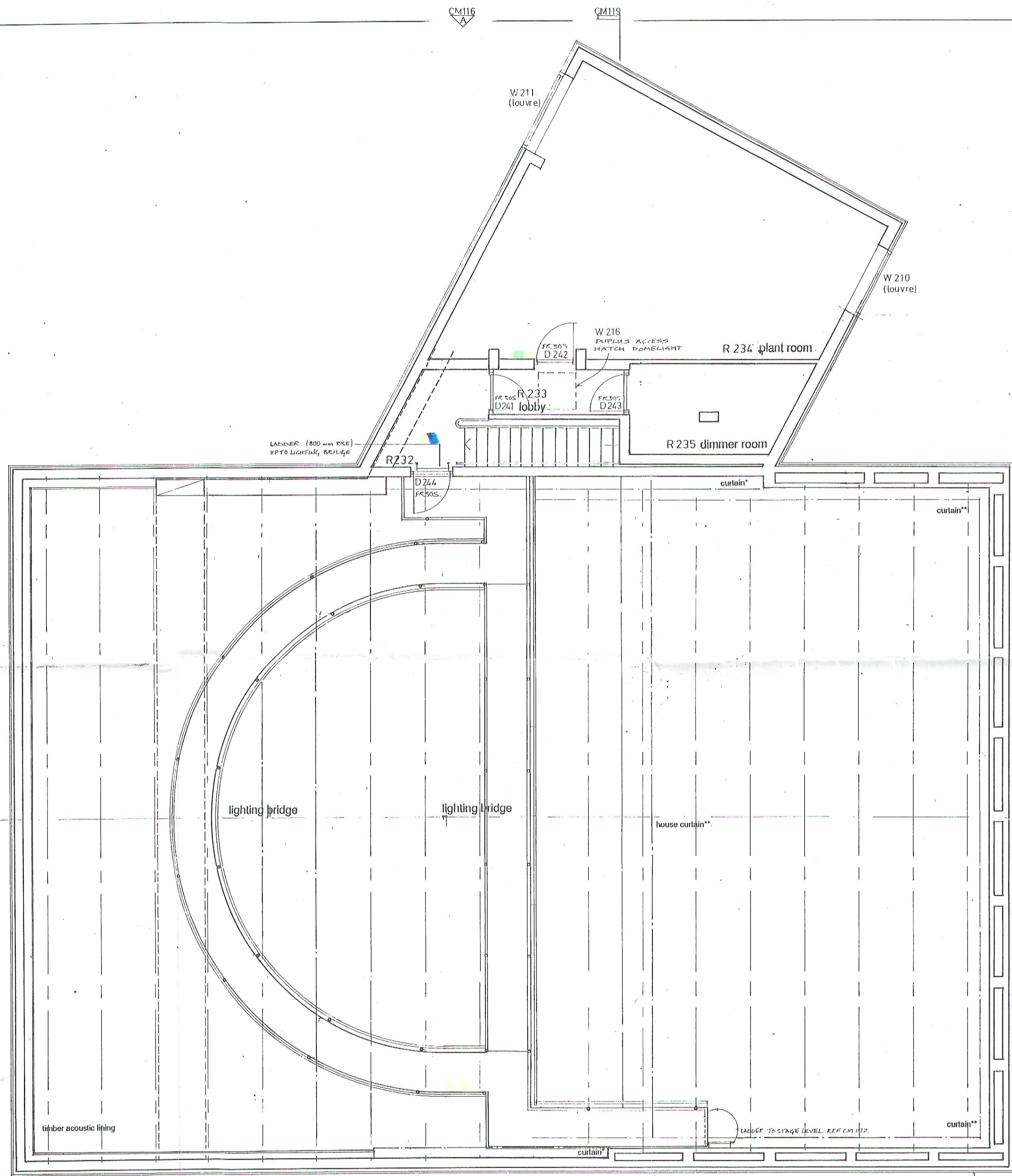
6A Orde Hall Street, London WC1N 3JW  
 Telephone 071-242 8102 Fax 071-404 0807

CHEQUER MEAD  
 EAST GRINSTEAD

THEATRE  
 LOWER GROUND PLAN

1:50

R CM 110 I



FIRE EXTINGUISHER KEY  
 ● POWDER (CO2)  
 ● CO2  
 ● WATER

J	19/6/95	BUILDING CONTROL ISSUE
I	13/6/95	REVISED TENDER ISSUE
		WZIK SHOWN. UNDERGROUND ALIENS LIGHTING BRIDGE SUSPENSORS DELETED PLANK REFUSED TO LOWER OPENINGS NEEDS RECONSTRUCTION WITH LOWER STAIR BRIDGE WALK-ON R 233 214 ZIC REVISED WALL THRU LIGHTING BRIDGES / STAIR STAGEWALL BRIDGE
H	21-5-95	DOOR / WINDOW / ROOM NOS. LOBBIES MOVED
G	11-5-95	REDEAWN - NEW PLAN

**TIM RONALDS ARCHITECTS**  
 6A Orde Hall Street, London WC1N 3JW  
 Telephone 071-242 8102 Fax 071-404 0807  
**CHEQUER MEAD**  
**EAST GRINSTEAD**

**THEATRE**  
**2 ND FLOOR PLAN**

1:50

**RCM 113 J**

Key:  
 \* provisional sum  
 \*\* within stage equipment budget

CM117 A

CM116

CM116 A

CM119

B  
 CM117