

DANNY LODGE
Mid Sussex Design Awards

Private client
Construction began: April 2015
Construction completed: August 2016
Contract value: £840,000



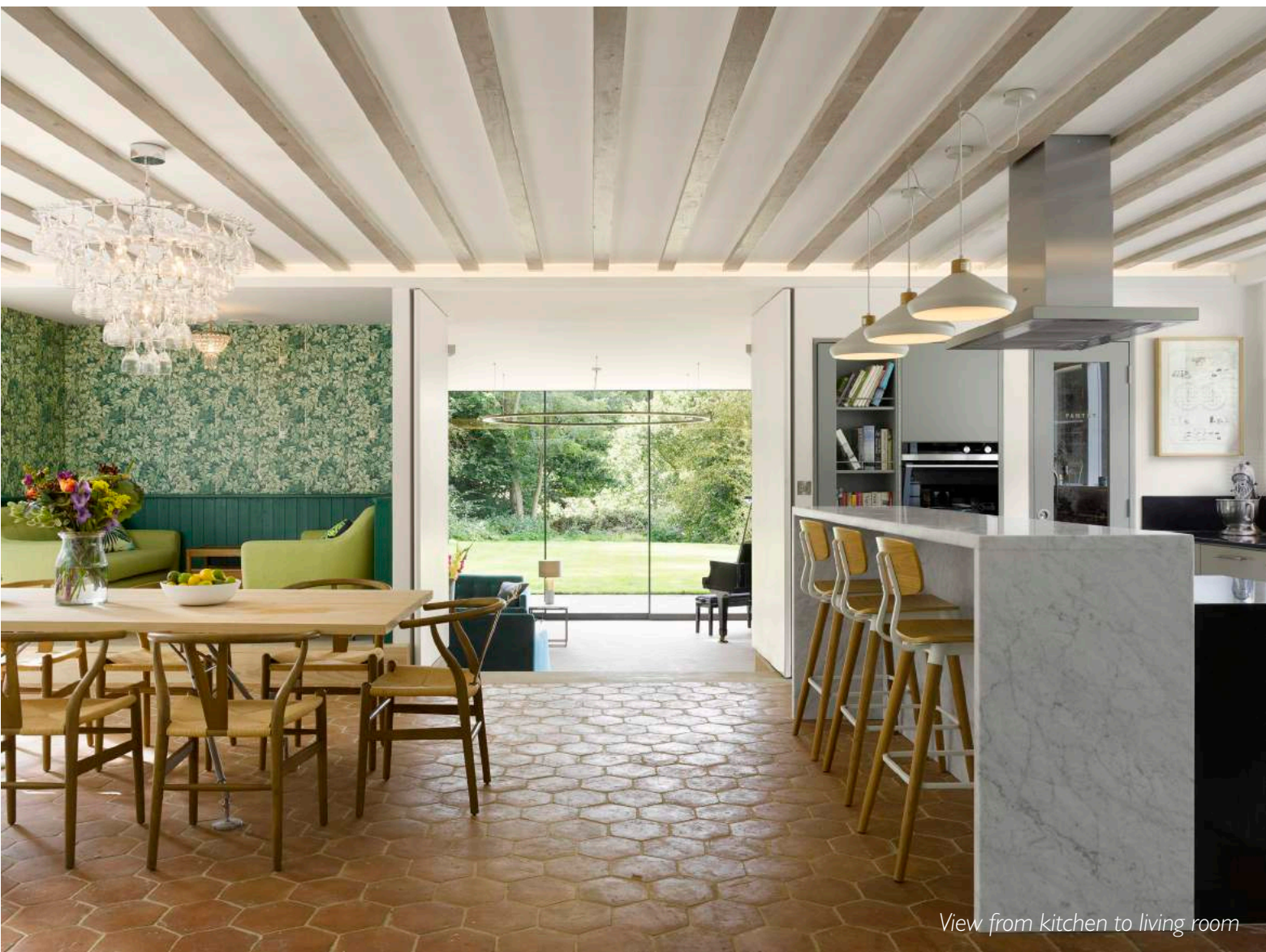
View from the lawn



The existing cottage



View from living room to kitchen



View from kitchen to living room



Black zinc cladding and quilted diaper brickwork



The 'pod'



Steel staircase with rainbow rubber tracks



'Scooby-Doo' rotating bookcase



Master bedroom

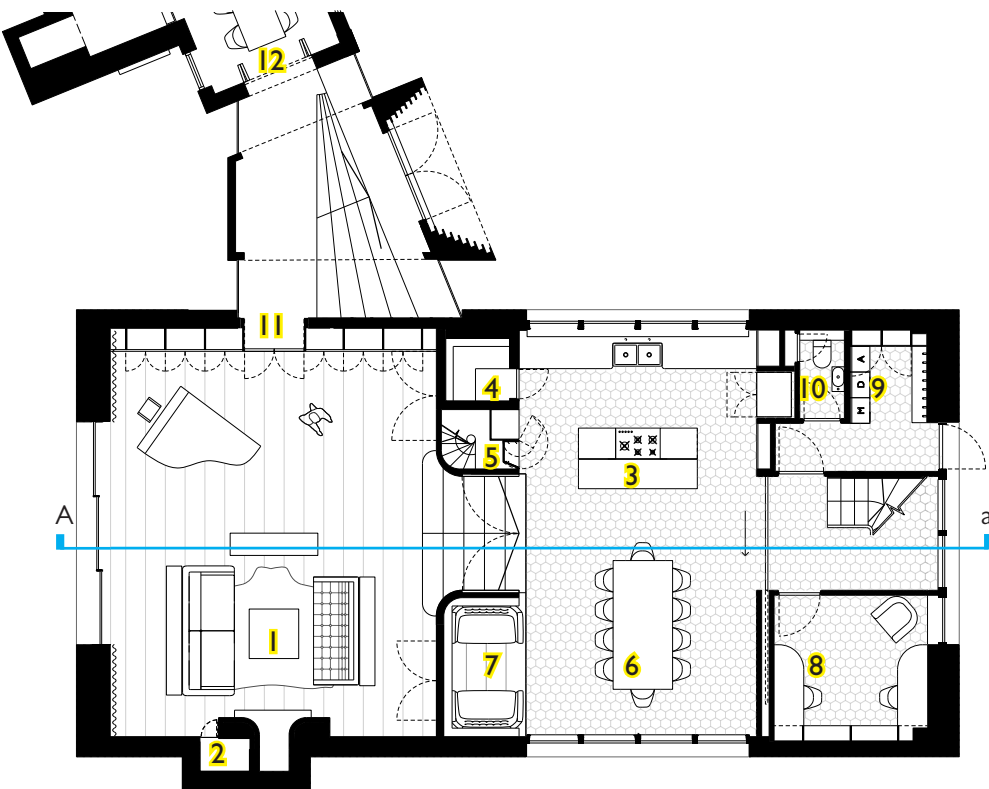
This project is a 400 sqm house extension that is four times bigger than the Victorian gamekeeper's lodge it adjoins, situated in the South Downs National Park.

Its barn-like form is connected to the existing cottage via a small link building which forms a new main entrance, providing access to both the cottage and barn areas. Black zinc cladding and large window openings are references to the materials and forms of agricultural buildings, while the ground floor brickwork plinth has been painstakingly and beautifully handcrafted with a contemporary twist on the traditional brick diaper pattern, commonly found on buildings in the local area.

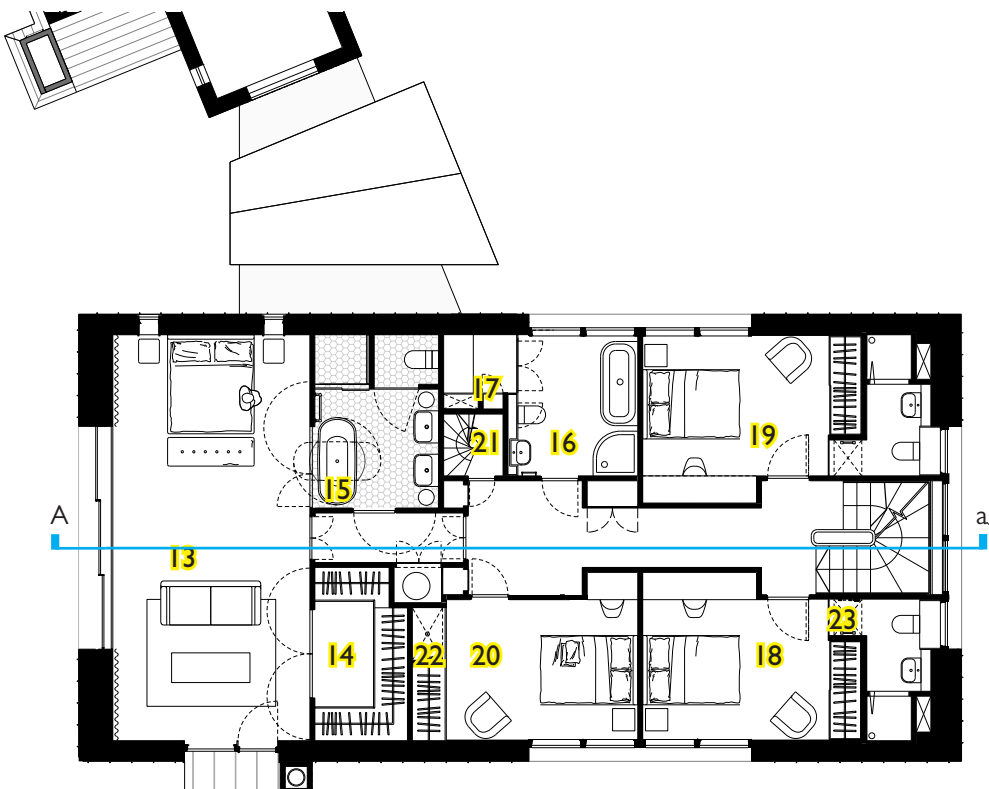
More than anything, however, this is a hard-working family home which manages to combine 'wow' moments of surprise and delight, with the everyday practicality demanded by family life.

On top of this, it has bucketloads of charm and personality. Various secret passageways and staircases, inspired by the traditions of the great british country house, make the house perfect for playing 'Sardines'. And you can pop through a hidden door on the ground floor to come out into the playroom on the top floor via a revolving 'Scooby Doo' bookcase, ensuring the kids are impossible to find before the school run. There's also a pull-out stage in the playroom, complete with red velvet curtain, along with a James Bond-style escape pod in the roof for when it all gets too much. Yes, really!

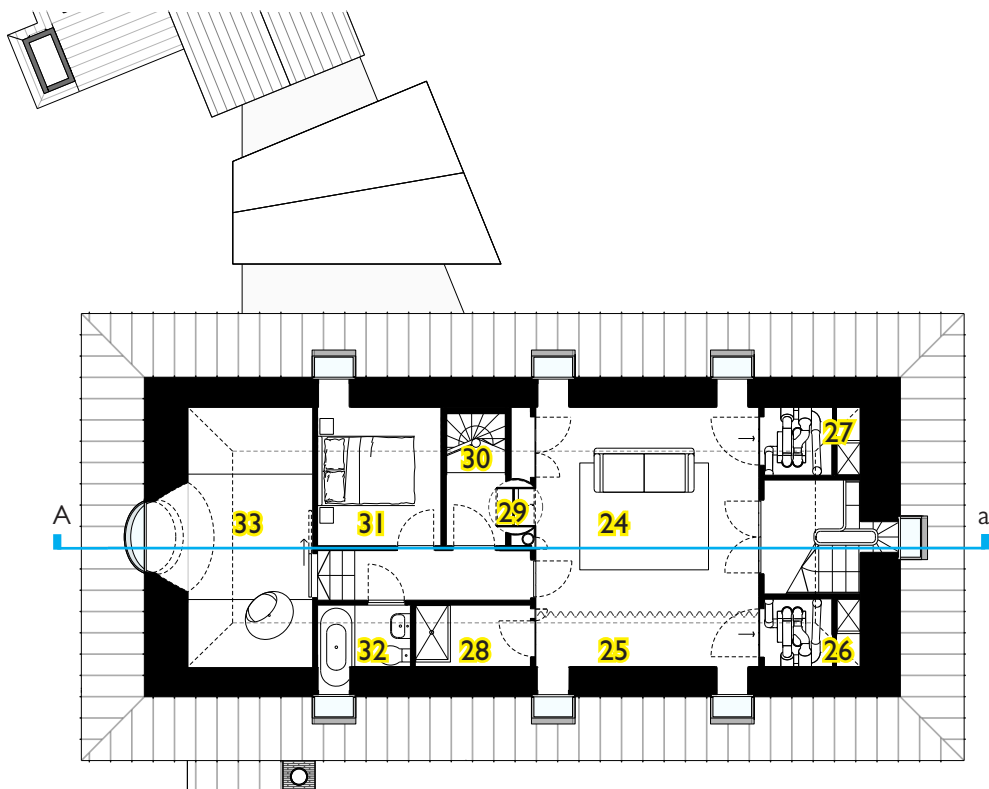
Key
1 Living Room 2 Priest hole 3 Kitchen 4 Pantry 5 Secret Stairs 6 Dining Room 7 Snug
8 Office 9 Coats & Boots 10 WC 11 Link 12 Existing Lodge 13 Master Bedroom
14 Dressing Room 15 Master Ensuite 16 Family Bathroom 17 Utility
18 Mia's Bedroom 19 Daisy's Bedroom 20 Arthur's Bedroom 21 Secret Stairs
22 Fireman's Pole from Den 23 Climbing Wall to Den 24 Playroom 25 Stage Set Area
26 Mia's Den 27 Daisy's Den 28 Arthur's Den 29 Spinning Bookcase 30 Secret Stairs
31 Guest Bedroom 32 Guest Ensuite 33 The Pod



Ground Floor Plan



First Floor Plan



Second Floor Plan