



Applicants last name	TRN Limited
Registered number (where applicable)	04624537
Description of applicant	Private Limited Company.

## Operating Schedule

Operating Schedule	
When do you want the premises licence to start?	2026-06-16

## Description of Premises

Operating Schedule	
Describe the premises	McDonald's Restaurant selling hot food and non-alcoholic drink for consumption on and off the premises.

## Activities Guidance

Which types of licensable activity will you be provisioning?	Late Night Refreshment
--	------------------------

## Activities

Activity #1.0	
Late Night Refreshment	
Type of Activity	Late Night Refreshment
Activity Verb	provision of late night refreshment
Please indicate standard days of Late Night Refreshment	Monday, Tuesday, Wednesday, Thursday, Friday, Saturday, Sunday
Please indicate the standard days and timings. Provide times using the 24 hour clock.	
Monday	
Monday from	23:00
Monday to	00:00
Tuesday	
Tuesday from	23:00
Tuesday to	00:00
Wednesday	
Wednesday from	23:00
Wednesday to	00:00
Thursday	
Thursday from	23:00
Thursday to	00:00
Friday	
Friday from	23:00

Friday to	00:00
Saturday	
Saturday from	23:00
Saturday to	00:00
Sunday	
Sunday from	23:00
Sunday to	00:00
Where will the provision of late night refreshment take place? Indoors may include a tent.	Indoors and outdoors

**Activity #2.0**

Hours premises is open to the public

Type of Activity	Hours premises is open to the public
Please indicate standard days of Hours premises is open to the public	Monday,Tuesday,Wednesday,Thursday,Friday, Saturday,Sunday
Please indicate the standard days and timings. Provide times using the 24 hour clock.	
Monday	
Monday from	06:00
Monday to	00:00
Tuesday	
Tuesday from	06:00
Tuesday to	00:00
Wednesday	
Wednesday from	06:00
Wednesday to	00:00
Thursday	
Thursday from	06:00
Thursday to	00:00
Friday	
Friday from	06:00
Friday to	00:00
Saturday	
Saturday from	06:00
Saturday to	00:00
Sunday	
Sunday from	06:00
Sunday to	00:00

**Premises Supervisor**

Premises Supervisor
---------------------

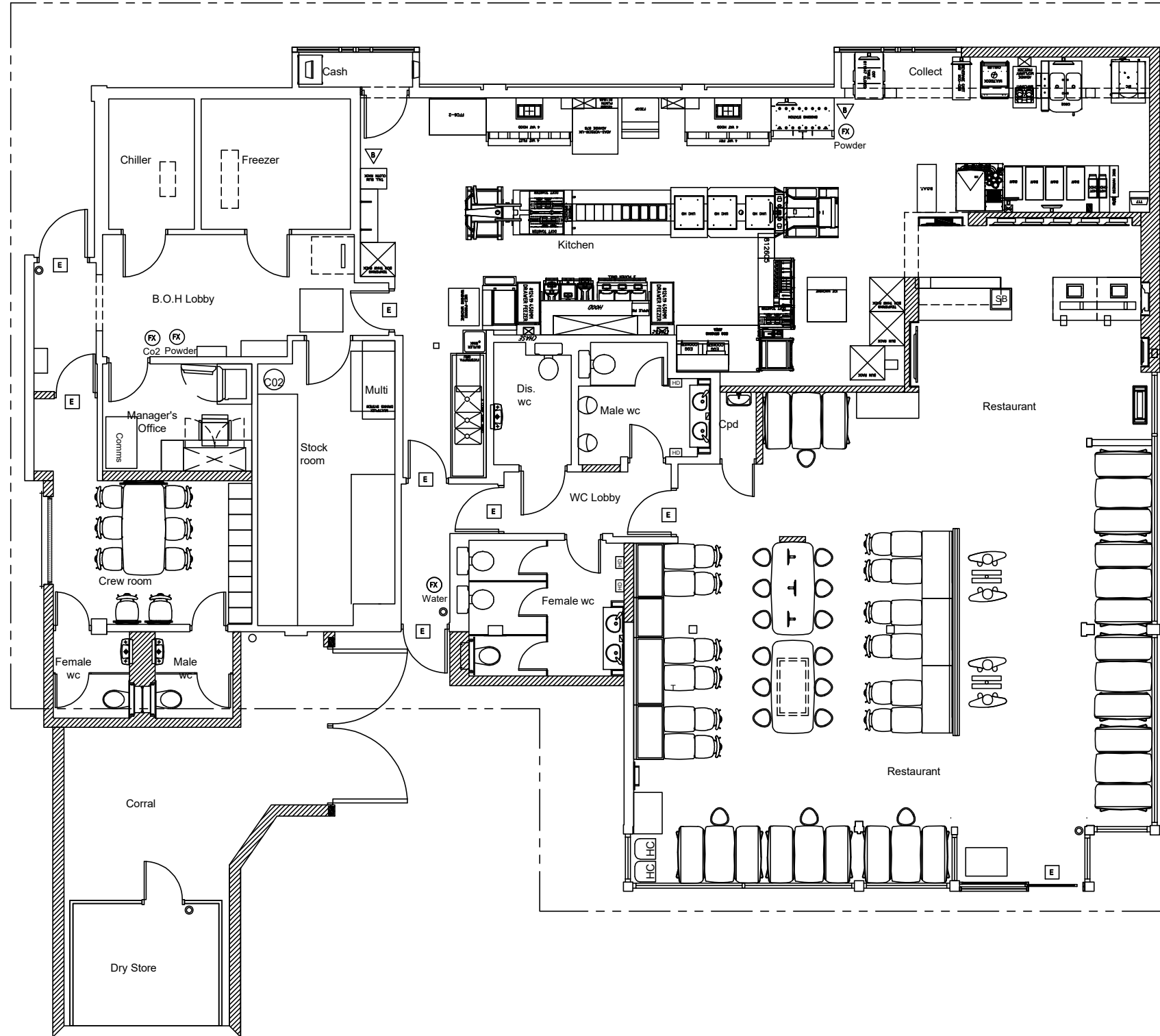
**Adult Entertainment**

--

<b>Adult Entertainment</b>	
Please highlight any adult entertainment or services, activities, or other entertainment or matters ancillary to the use of the premises that may give rise to concern in respect of children.	The premises will operate as an outlet of food and non-alcoholic drink and does not provide any adult entertainment or service that gives rise to a concern in respect of children.

## Objectives

<b>Licensing Objectives</b>	
Please list here steps you will take to promote all four licensing objectives together.	This restaurant understands that in extending our opening hours, we have a duty to the local community and that we continue to protect our staff and customers from danger and harm. We believe that the systems we have in place are robust, thorough and will, as far as reasonably practicable, secure the promotion of the four licensing objectives. It should be noted that no McDonald's restaurant within the United Kingdom serves alcohol and further, none of our drinks or food are served to customers in glass receptacles. We are eager to work in partnership with all responsible authorities to ensure the promotion of the four licensing objectives. We also seek to work with the local communities, whom we serve, in achieving a successful cohesion between our business operations and our neighbours.
The prevention of crime and disorder	This restaurant is keen to work in partnership with the local police service to prevent crime and disorder. CCTV: McDonald's operates a robust CCTV Policy to ensure compliance with Data Protection Legislation and to assist the Police with the prevention and detection of crime. At all stores where CCTV is in operation appropriate signage reflecting this information is displayed. McDonald's operate digital motion activated CCTV systems where images are retained on a hard drive system. All CCTV equipment is of a standard suitable to record images of a proper quality, it meets the industry standard and has LGC Forensics or Kalagate Certification. As part of the digital system an alarm will sound if the equipment is faulty or not recording, thereby alerting management for the need to intervene. The CCTV system is regularly serviced by qualified maintenance technicians. Access to the CCTV system will be provided to Police Officers at their request where reasonable. Staffsafe: A Staffsafe™ system with both audio and visual monitoring capability will be installed in the restaurant, this system, can be activated by either fixed or mobile panic buttons. Once activated the system links the restaurant to an external monitoring centre capable of intervening to resolve crime and disorder issues and/or provide the appropriate advice or instruction to support and protect the restaurant's staff and customers. At this restaurant all shift managers have safety and security training; including Maybo SIA accredited Conflict Management Training.
Public safety	This restaurant is keen to work in partnership with the local Fire Service and Environmental Health Officer to ensure public safety. This restaurant has safety systems in place to protect the safety of customers and staff at all times (such as Staffsafe). We work with the local Environmental Health Office and local Fire Service to ensure we are complying, as far as reasonably practicable, with relevant Health and Safety and Fire Safety Legislation. This restaurant is also subject to inspections from our own safety and security teams to ensure our systems are being maintained. All of our restaurant staff receive comprehensive safety training to ensure that safe working methods are adopted and all staff are trained on the restaurant's evacuation procedure in the event of a fire or other dangerous occurrence. This store operates a "No Open Alcohol Containers" policy to prevent persons carrying open alcohol into the in-store area.
The prevention of public nuisance	Litter: McDonald's were the first company in our sector to introduce litter patrols in the early 1980's. McDonald's is committed to carry out litter patrols collecting both McDonald's packaging and any other litter that has been carelessly discarded. We are happy to act on recommendations from the Environmental Health Officer should they feel that we should extend our patrol to a nearby area, as far as this is reasonably practicable. All of McDonald's packaging displays the recycle symbol to encourage our customers to deal with their waste responsibly. Further details regarding McDonald's commitment to reducing waste and litter nuisance can be found at the "Our World" section of the McDonald's website: <a href="https://www.mcdonalds.com/gb/en-gb/our-plan-for-change.html">https://www.mcdonalds.com/gb/en-gb/our-plan-for-change.html</a> Noise: Where it is practical to do so we are content to put measures in place to limit noise. All McDonald's restaurant doors are self-closing and we try to encourage our customers to be considerate to our neighbours and to limit noise both when ordering their food and on leaving the local area.
The protection of children from harm	McDonald's do not anticipate that unaccompanied children will use the restaurant in the extended hour's period covered by this licensing application. We do however take their safety extremely seriously and will continue to employ the same practices to ensure that they are protected from harm at all times when visiting the restaurant.



NOTES

FIRE SAFETY EQUIPMENT

- Fire Extinguisher Water
- Fire Extinguisher Co2
- Fire Extinguisher Powder
- Fire Extinguisher Foam
- Fire Exit
- Fire Blanket
- Fire alarm call point

Note:  
All fry stations have automatic fire suppression devices fitted.

Licensable activity:  
Sale of Hot food & Drink after 11pm.

Rev. Date. Amendments

PROJECT  
0585 Burgess Hill  
Civic Way,  
Queen Elizabeth Ave,  
Burgess Hill  
RH15 9AR  
01444 239355

TITLE  
Ground floor plan  
(For Licencing)

Date: May 2026 Drawn: C.T.S.G. Discipline: Arch

Scale: 1:100@A3 Type: ORG. No. L/0585/001 Issue: 001