

# How the Refuse and Recycling Service works

Every household in Mid Sussex has two wheeled bins -

- A blue lidded recycling bin
- A grey lidded waste bin

A bin is collected every week -

- One week we collect the recycling bin
- The next week we collect the waste bin

**Calendars of collection dates are available online at [www.midsussex.gov.uk/recycling](http://www.midsussex.gov.uk/recycling) or by telephoning 01444 477440.**

We offer an assisted collection service for those who cannot manage the bins.

For properties that are unable to accommodate wheeled bins we have an alternative in place. Flats and communal homes may have differing collection facilities, depending on circumstances.

We can only empty waste which is in a container provided by the Council.

Chargeable collections of bulky household waste are available – [www.midsussex.gov.uk/recycling](http://www.midsussex.gov.uk/recycling)

You can take any extra waste and other items for recycling to the Household Waste Recycling Sites at Burgess Hill or East Grinstead -

**Burgess Hill** - Fairbridge Way, RH15 8AR  
01444 243041

**East Grinstead** - Imberhorne Lane, RH19 1TZ  
01342 326475

## Further Information

### Garden Waste

We offer a kerbside collection of garden waste. The service is available for an annual subscription. Garden waste is collected from the kerbside, once a fortnight, in a wheeled bin (a limited number of biodegradable bag subscriptions are available). Collected material is then turned into compost.

### Contact Us

web: [www.midsussex.gov.uk/recycling](http://www.midsussex.gov.uk/recycling)

email: [wastematters@midsussex.gov.uk](mailto:wastematters@midsussex.gov.uk)

Telephone: **01444 477440**

Write to:

**Cleansing Services  
Mid Sussex District Council,  
Oaklands, Haywards Heath,  
West Sussex, RH16 1SS**

**By working as a partnership, West Sussex local authorities will reduce landfill by being leaders in waste prevention and recycling and by using rubbish as a resource.**

#### **Need help accessing this service?**

For information on translation services and obtaining publications in a different format

**Tel 01444 458166**



## Refuse and Recycling Service

Details of the wheeled bin service



*Working together for a better Mid Sussex*

[www.midsussex.gov.uk/recycling](http://www.midsussex.gov.uk/recycling)

# YES please

(in your **blue lidded** recycling bin)



**Plastic bottles**



**Glass bottles and jars**



**Paper and cardboard**



**Food and drink cans, aerosols and aluminium foil**



**Tetra Paks**

**Recycling - loose (no plastic bags), clean, dry, no food residue please.**

If you frequently do not have enough capacity in your recycling bin, please contact us.

You can recycle lots of other things too – but not in your blue lidded bin. Items such as garden waste, electrical goods, batteries, CDs, wood, textiles, shoes, water cartridges, long life bulbs and lots more! Look at our website or get in touch for details.

**Placing the wrong things in recycling bins slows down the recycling process and uses valuable time and money to sort.**

# NO thank you

(in your **blue lidded** recycling bin)



**General waste**



**Garden waste**



**Other plastics**



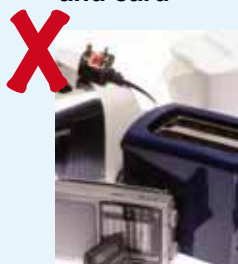
**Plastic bags**



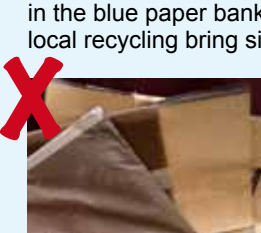
**Food soiled paper and card**



**Shredded paper**  
(you can compost it or put it in the blue paper banks at local recycling bring sites)



**Electrical items**



**Wet cardboard and paper**

Please **IGNORE** the  recycle sign on plastics. **Plastic recycling is complex and we can currently only take plastic bottles.**

WRAP ([www.wrap.org.uk](http://www.wrap.org.uk)) is working with manufacturers on changing packaging and making it easier to recycle other plastics.

# YES please

(in your **grey lidded** waste bin)



Rubbish that can't be recycled in your recycle bin including: -

- ✓ **Plastic items – except bottles** (yoghurt/food trays/margarine tubs/punnets)
- ✓ **Kitchen waste** (securely wrapped to avoid smells)
- ✓ **Nappies** (securely wrapped)
- ✓ **Polystyrene**
- ✓ **Pet bedding** (in small quantities)

# NO thank you

(in your **grey lidded** waste bin)

- ✗ **Garden waste**
- ✗ **Electrical goods and batteries**
- ✗ **Paint / household chemicals**
- ✗ **Large/bulky household waste items**
- ✗ **Business waste**
- ✗ **Soil/rubble/bricks**

Problems such as smells, flies and vermin in general waste bins can be avoided by adopting sensible precautions –

- Securely wrap and tie any potentially smelly waste
- Ensure the bin lid is always closed
- Try to avoid storing your bin in direct sunlight
- Rinse containers and wrappings

**Please ensure that your bin is at the edge of your property, at the point nearest the highway, by 7am on the day of collection.**

**Bin lids must be fully closed to enable collection.**

**Any waste not in the wheeled bin will not be collected.**