

Gravetye Manor



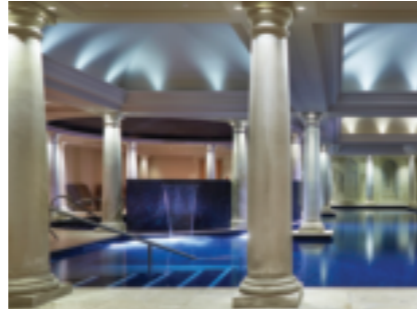
Gravetye Manor, Vowels Lane  
West Hoathly, Sussex  
RH19 4LJ, 01342 810567  
[www.gravetyemanor.co.uk](http://www.gravetyemanor.co.uk)

BORDE HILL GARDEN



Borde Hill Garden, Borde Hill Lane  
Haywards Heath, West Sussex  
RH16 1XP, 01444 450326  
[www.bordehill.co.uk](http://www.bordehill.co.uk)

ALEXANDER HOUSE HOTEL AND UTOPIA SPA



Alexander House Hotel & Utopia Spa  
Turners Hill, East Grinstead  
RH17 4QD, 01342 714914  
[www.alexanderhouse.co.uk](http://www.alexanderhouse.co.uk)

THE BOLNEY Estate



Bolney Wine Estate, Foxhole Lane  
Bolney, Haywards Heath  
RH17 5NB, 01444 881575  
[www.bolneywineestate.com](http://www.bolneywineestate.com)

HICKSTEAD



The All England Jumping Course  
Hickstead, West Sussex  
RH175NU, 01273 834315  
[www.hickstead.co.uk](http://www.hickstead.co.uk)

High Beeches



High Beeches Woodland & Water Gdn  
High Beeches Lane Handcross, West  
Sussex, RH17 6HQ, 01444 400589  
[www.highbeeches.com](http://www.highbeeches.com)

Jeremy's restaurant

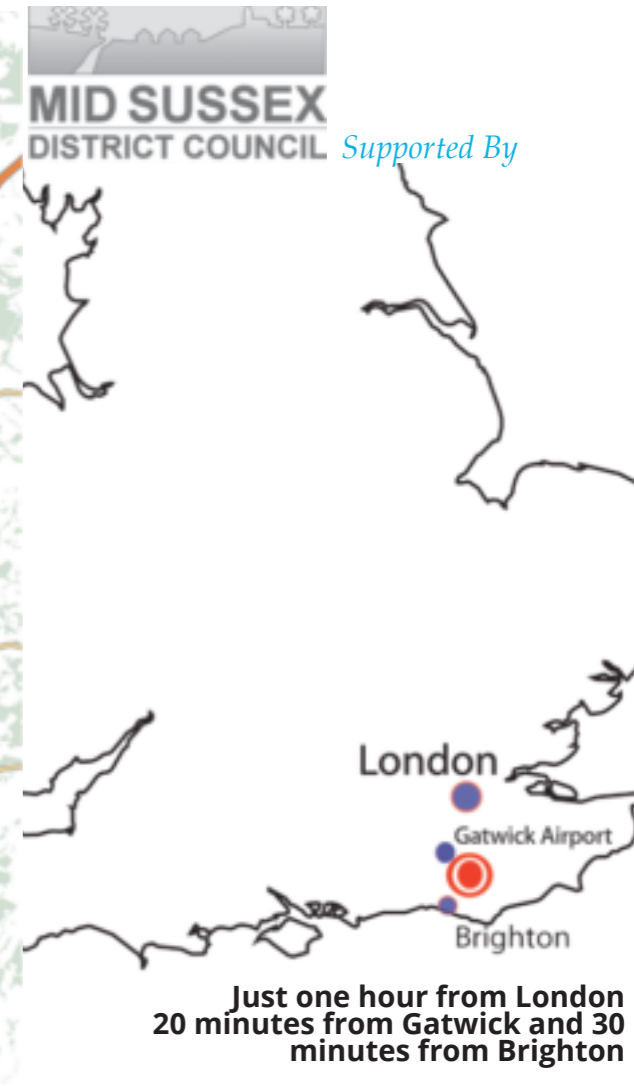


Jeremy's Restaurant, Borde Hill  
Haywards Heath, West Sussex  
RH16 1XP, 01444 441102  
[www.jeremysrestaurant.co.uk](http://www.jeremysrestaurant.co.uk)

EXPERIENCE MID SUSSEX



facebook.com/experiencemidsussex  
[experiencemidsussex.co.uk](http://experiencemidsussex.co.uk)



Just one hour from London  
20 minutes from Gatwick and 30  
minutes from Brighton

Kew ROYAL BOTANIC GARDENS



Wakehurst Place, Selsfield Road  
Ardingly, West Sussex  
RH17 6TN, 01444 894067  
[www.kew.org/wakehurst](http://www.kew.org/wakehurst)

NATIONAL TRUST



Kingscote Estate, Mill Place Farm  
Vowels Lane, East Grinstead  
RH19 4LG, 01342 327535  
[www.kingscoteestate.com](http://www.kingscoteestate.com)

NATIONAL TRUST



National Trust Nymans  
Staplefield Road, Handcross, W Sussex  
RH17 6EB, 01444 405250  
[www.nationaltrust.org.uk/nymans](http://www.nationaltrust.org.uk/nymans)

OCKENDEN MANOR HOTEL AND SPA



Ockenden Manor Hotel & Spa  
Ockenden Lane, Cuckfield, West Sussex  
RH17 5LD, 01444 416111  
[hshotels.co.uk/ockenden-manor-hotel-and-spa](http://hshotels.co.uk/ockenden-manor-hotel-and-spa)

RIDGEVIEW ENGLAND



Ridgeview Wine Estate  
Fragbarrow Lane, Ditchling Common  
Sussex, BN6 8TP, 01444 242040  
[www.ridgeview.co.uk](http://www.ridgeview.co.uk)

SOUTH OF ENGLAND SHOWGROUND



South of England Showground  
Selsfield Road, Ardingly, West Sussex  
RH17 6TL, 01444 892700  
[www.seas.org/uk](http://www.seas.org/uk)

SOUTH LODGE AN EXCLUSIVE HOTEL



South Lodge Hotel, Brighton Road  
Lower Beeding, Horsham,  
West Sussex RH13 6PS, 01403 891711  
[southlodgehotel.co.uk](http://southlodgehotel.co.uk)



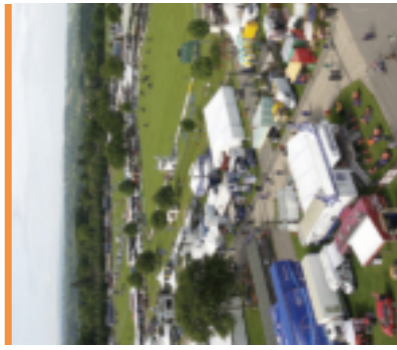
## EXPERIENCE MID SUSSEX

### Experience Venues in Mid Sussex

*Two of the most flexible venues in the heart of Sussex play host to festivals, fairs, corporate events, conferences, personal celebrations, equestrian sport and much more.*

Each venue offers indoor, outdoor and covered space with the support you need to run all kinds of events matched with a friendly and flexible approach that will ensure your event delivers what you need.

Whether you are a professional event organiser, corporate business, private organisations or individual, Experience Mid-Sussex venues offer a distinctive approach and facilities that will make your event special and memorable.



The South of England Showground



The All England Jumping Course, Hickstead

*"Old Surrey Burslow & West Kent Hunt, Ratcatchers Ball The South of England Showground It was the best food we've ever had and when word gets round to all our members we're certain that next year we'll sell even more tickets as a result."*

Unspoilt charm and outstanding natural beauty

## EXPERIENCE MID SUSSEX

## EXPERIENCE MID SUSSEX

### Experience Gardens in Mid Sussex

*The Weald of Mid Sussex is home to four world famous gardens all created over a hundred years ago and all offering a huge variety of things to see and do.*

Enjoy the outstanding views, many rare plants along with quiet places to appreciate the beauty of the English countryside. Amongst the four gardens discover wonderful rose gardens, stunning herbaceous borders, spectacular autumn colour as well as the charm of native woodlands and ancient wildflower meadows. There are many events for adults and children as well as places to eat providing a hugely enjoyable day out for all ages.



Borde Hill Garden



High Beeches



Wakehurst Place



National Trust Nymans

Unspoilt charm and outstanding natural beauty

## EXPERIENCE MID SUSSEX

## EXPERIENCE MID SUSSEX

### Experience Accommodation in Mid Sussex

*Each luxury 4 and 5 star hotel has a distinct personality and makes the perfect base to explore Mid Sussex.*

All recommended properties are beautifully appointed with award winning restaurants and offer an exquisite service and stunning vistas. Two of our perfectly selected hotels also have luxurious spas featuring a choice of pools and leisure facilities.

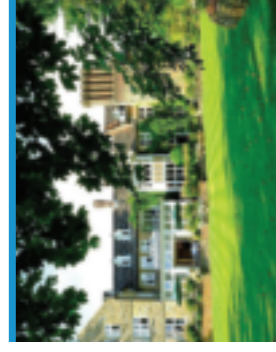
Wherever you decide to stay, we promise you will feel suitably at home.



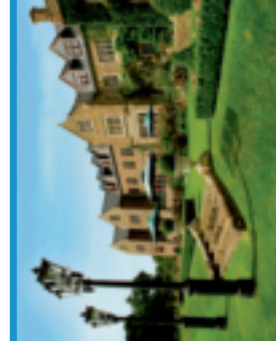
Alexander House Hotel & Utopia Spa



Graveley Manor Hotel & Restaurant



Ockenden Manor Hotel & Spa



South Lodge an Exclusive Hotel

Unspoilt charm and outstanding natural beauty

*"A unique group of attractions, hotels and venues offering the best experiences Mid Sussex has to offer."*

Whether you are a resident of the beautiful Sussex countryside or a visitor come to explore, Experience Mid Sussex presents a selection of the very best attractions, hotels and venues. From breath-taking houses and gardens, vineyards and show ground venues to 4 and 5 star hotels, restaurants and spas, there is plenty to discover. Members of Experience Mid Sussex have come together to provide a truly unique and memorable visitor experience.

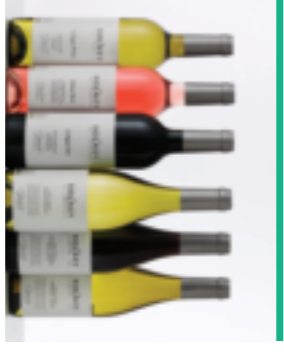
*"Some would have you believe that England is a recent arrival on the world wine stage. In fact, we are part of an English winemaking tradition stretching back almost 2,000 years, when the Romans occupied this peaceful corner of rural Sussex."*

### Experience Vineyards in Mid Sussex

We are home to some of England's finest, award winning wines. The climate in southern England has become warmer, providing the perfect conditions for a vine-growing. Across the county you can find a range of familiar grape varieties including Bacchus, Chardonnay and Pinot Noir, and more exotic names like Müller-Thurgau, Dornfelder and Schönburger



Kingscote Estate and Vineyard



Bohney Wine Estate

*More fantastic experiences waiting to be discovered*



Ridgeview Wine Estate

Unspoilt charm and outstanding natural beauty

